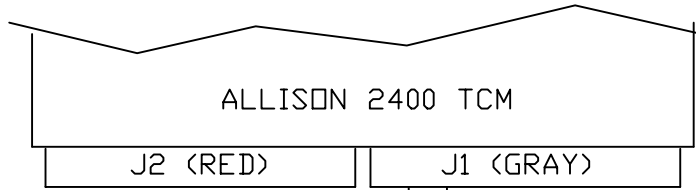


NAVISTAR 3200 CONTROL WIRING HYDRAULIC BRAKES



REPROGRAM ALLISON TCM PIN J1-22
(OUTPUT SPEED INDICATOR) TO
GROUND ON ABOVE 70 SHAFT RPM
GROUND OFF BELOW 60 SHAFT RPM

ALLISON 1000/2000 TCM
PIN J1-22 (OUT-)
TML P/N
INT # 3517243C1
PACKARD # 12084912
female 18G

+12V DURING
WHEEL SLIP

WABCO HYDRAULIC
D VERSION FRAME
MOUNT ABS
MODULE

WABCO BLACK
CONNECTOR
PIN 7
IHC WIRE
N94AD 18 GY

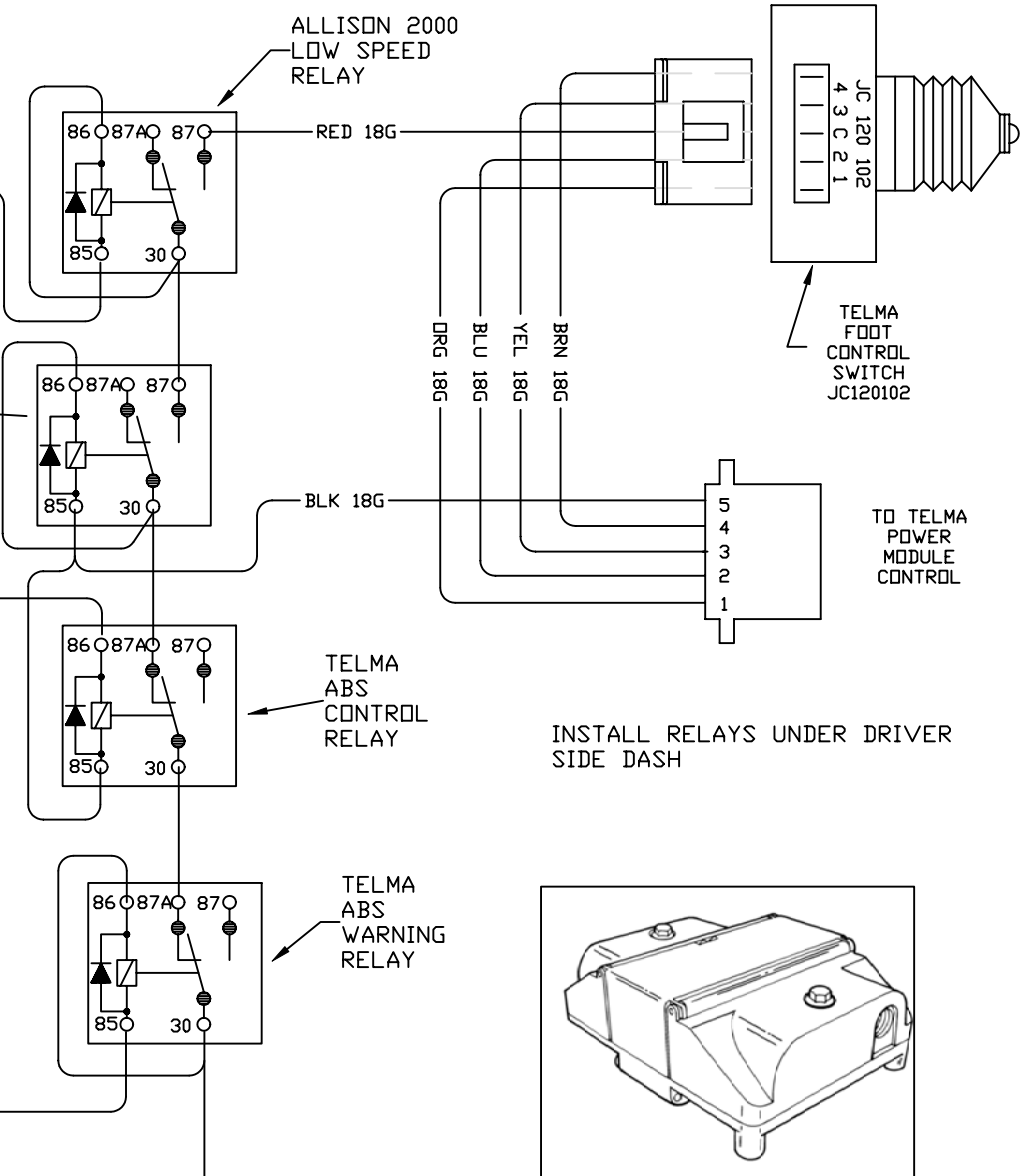
WABCO FRAME MOUNT ABS HARNESS CONNECTOR
SOLID CRIMP TYPE SOCKET CONTACT TML
DEUTSCH # 0462-209-16141 (14G-16G)
NAVISTAR # 2034787C1 (14-16G)
DEUTSCH # 0462-201-16141 (16G-18G)
NAVISTAR # 1680205C1 (16-18G)
HAND CRIMP TOOL FOR SOLID CONTACTS
LADD # HDT-1561
VENDOR: LADD INDUSTRIES 800 223-1236

DO NOT
CONNECT

PNK 18G

10AMP
FUSE

← IGNITION +12V RED/WHT 18G



25-MAY-05