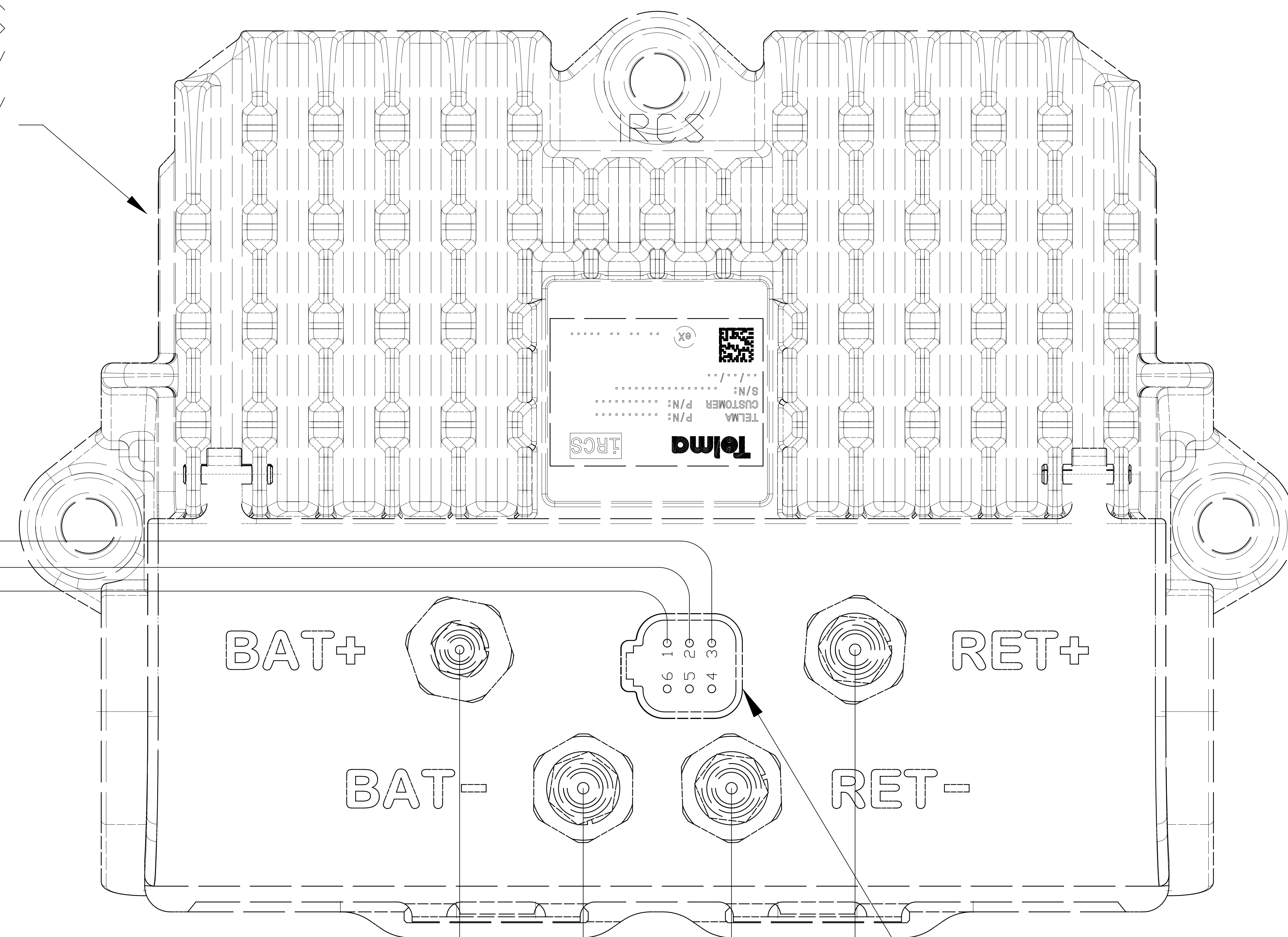


TL134071
 WIRING DIAGRAM
 TRCM2 iRCS
 DYNAMOMETER
 14nov19jh

iRCS
 JE1002122 12V
 JE1002344 24V

RECOMMENDED WIRE: GXL OR SGX FLEXIBLE 125°C
 CAN CABLE: J1939-15 NON SHIELDED



TRCM2
 TIG31069
 12V/24V

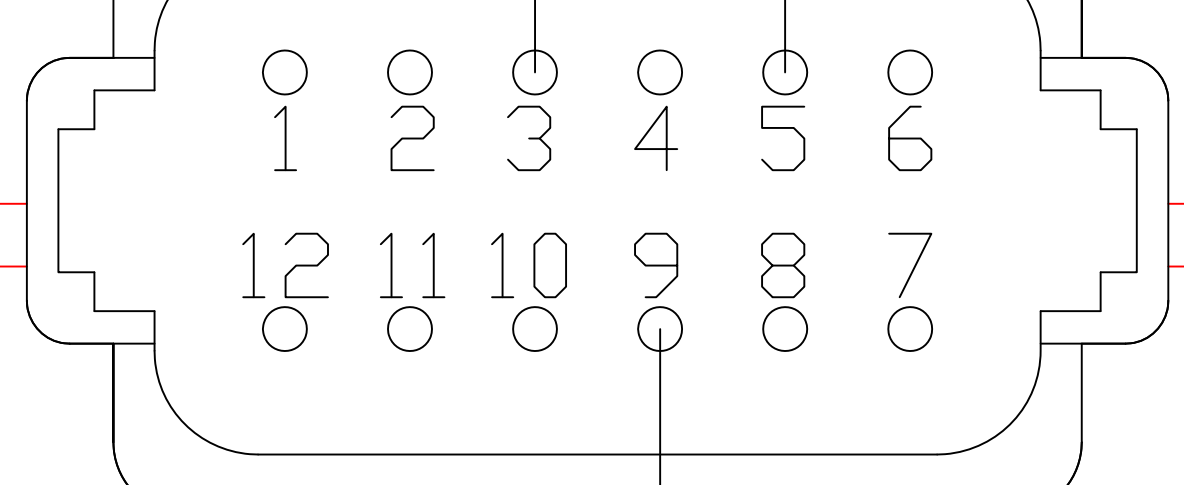
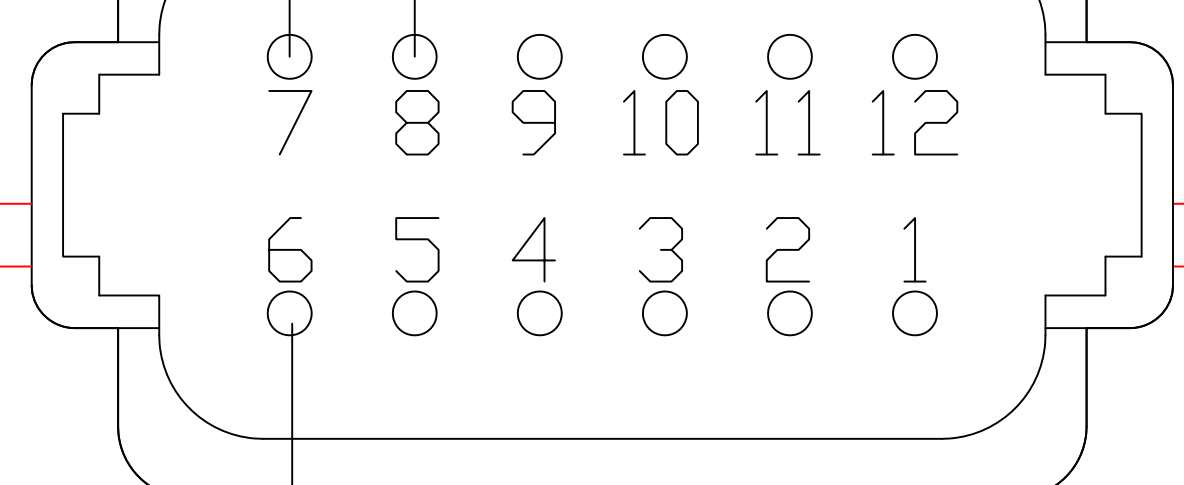
CAN CABLE

iRCS CAN HI
 iRCS CAN LO

switched power +

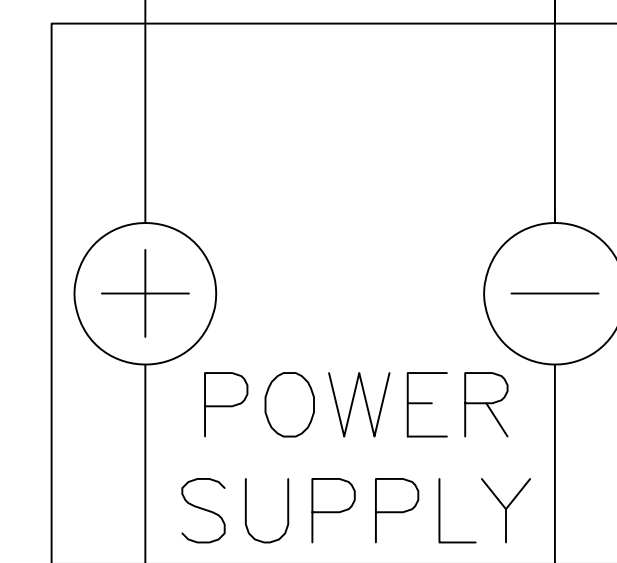
A (gry)

B (blk)

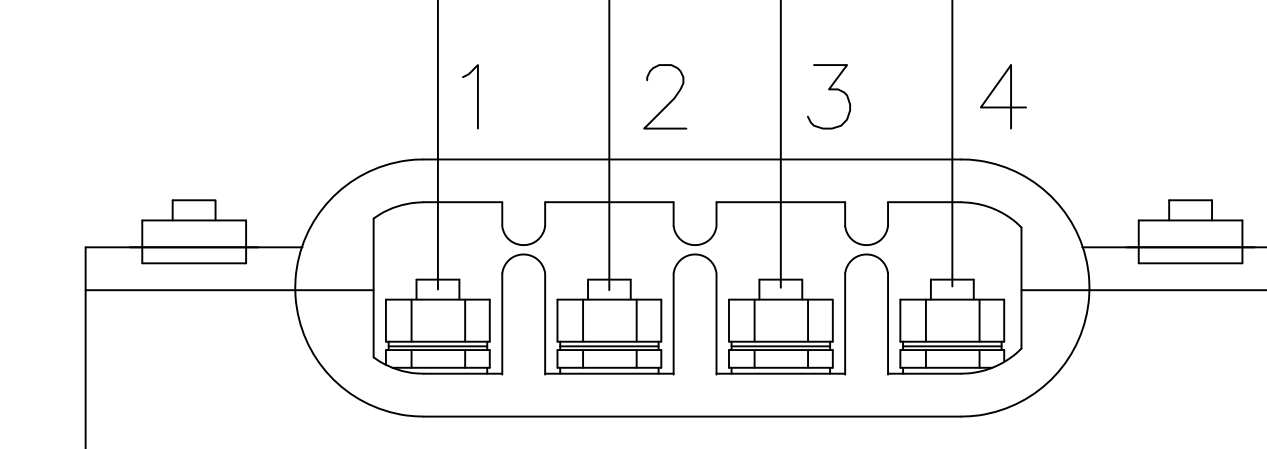
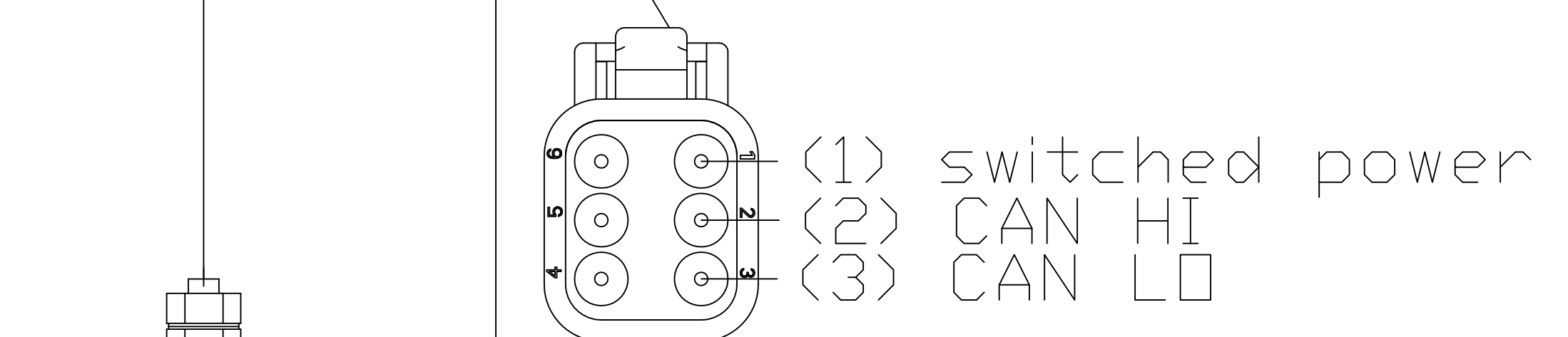


control
 input 0-5V

ground



RETARDER
 GROUND



Note: 0-5V input is proportional to 0-100% iRCS output

TRCM2 MATING CONNECTORS
 DTM PLUG (GRY) TIG31070
 DTM PLUG (BLK) TIG31071
 DTM WEDGELock TIG31072
 DTM TML TIG31067

Refer to <https://telmausa.com/Downloads/TL133013.pdf>
 TRCM2 iRCS Dyno User Guide for additional information