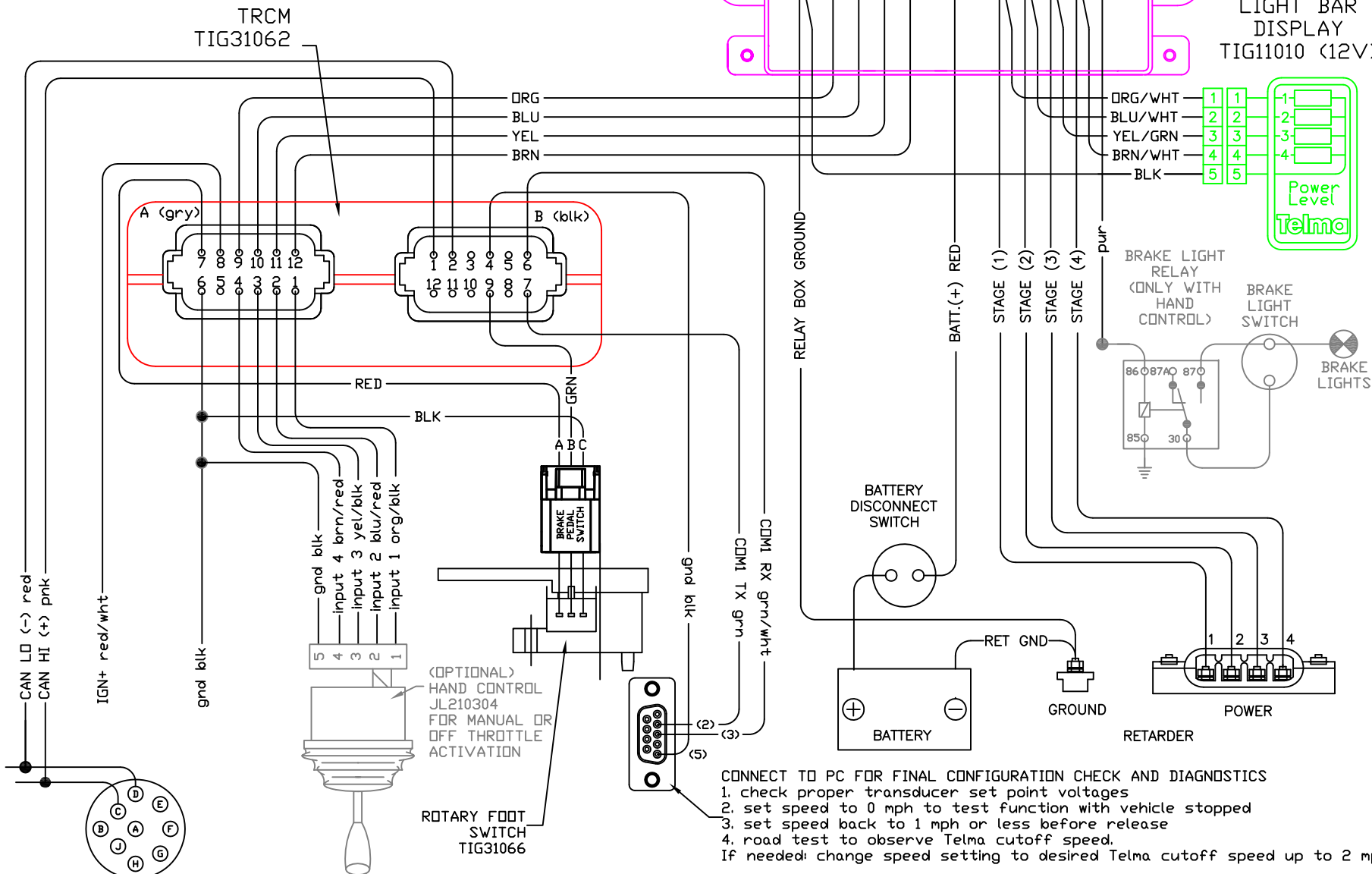
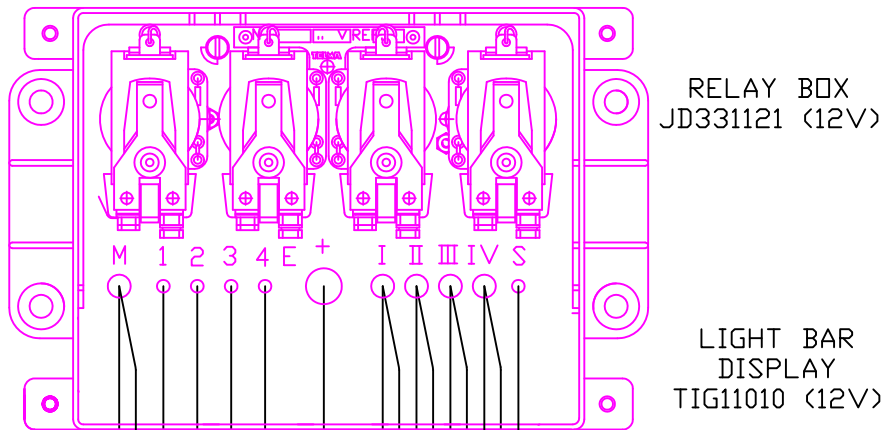


TL134064
 WIRING DIAGRAM
 TRCM
 AND J1939 with
 rotary switch for
 hydraulic brake
 systems
 16aug16jh

CAN control features:
 TRCM active outputs turn off
 under the following conditions.
 1) during ABS event
 (with progressive reactivation)
 2) Speed below 1 mph
 3) Throttle position greater than 1%
 4) Cruise Control is engaged



BACK OF J1939
 DIAGNOSTIC CONNECTOR