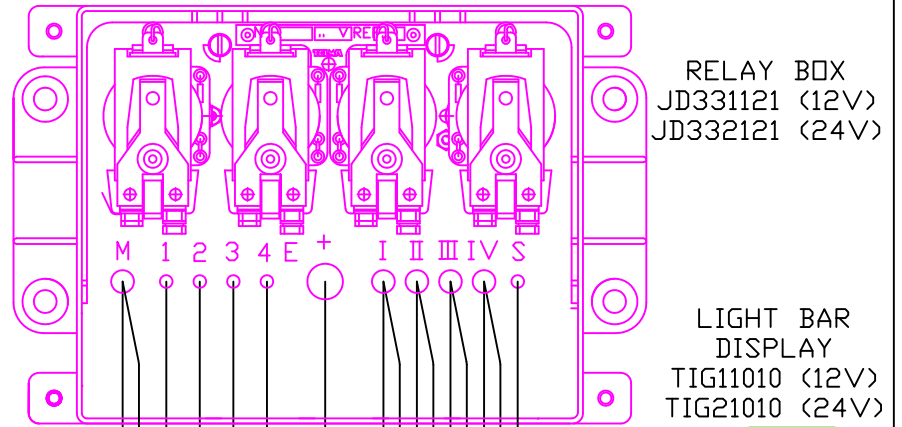
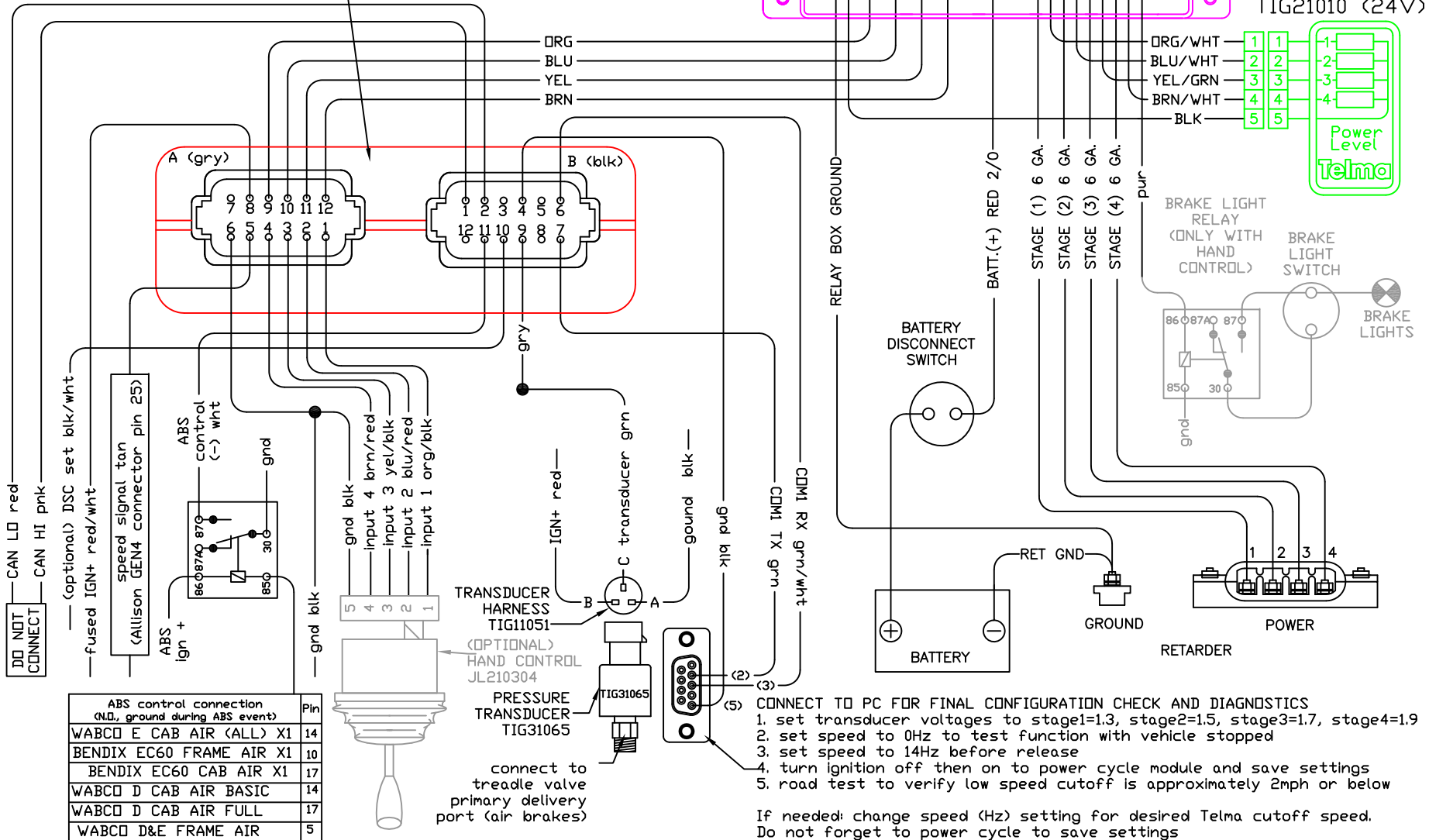


TL134054 AIR BRAKE WIRING DIAGRAM WITH TRCM AND NO J1939 29mar17jh



TRCM
TIG31062
12V/24V



ABS control connection (N.D., ground during ABS event)	Pin
WABCO E CAB AIR (ALL) X1	14
BENDIX EC60 FRAME AIR X1	10
BENDIX EC60 CAB AIR X1	17
WABCO D CAB AIR BASIC	14
WABCO D CAB AIR FULL	17
WABCO D&E FRAME AIR	5

CONNECT TO PC FOR FINAL CONFIGURATION CHECK AND DIAGNOSTICS

1. set transducer voltages to stage1=1.3, stage2=1.5, stage3=1.7, stage4=1.9
2. set speed to 0Hz to test function with vehicle stopped
3. set speed to 14Hz before release
4. turn ignition off then on to power cycle module and save settings
5. road test to verify low speed cutoff is approximately 2mph or below

If needed: change speed (Hz) setting for desired Telma cutoff speed.
Do not forget to power cycle to save settings