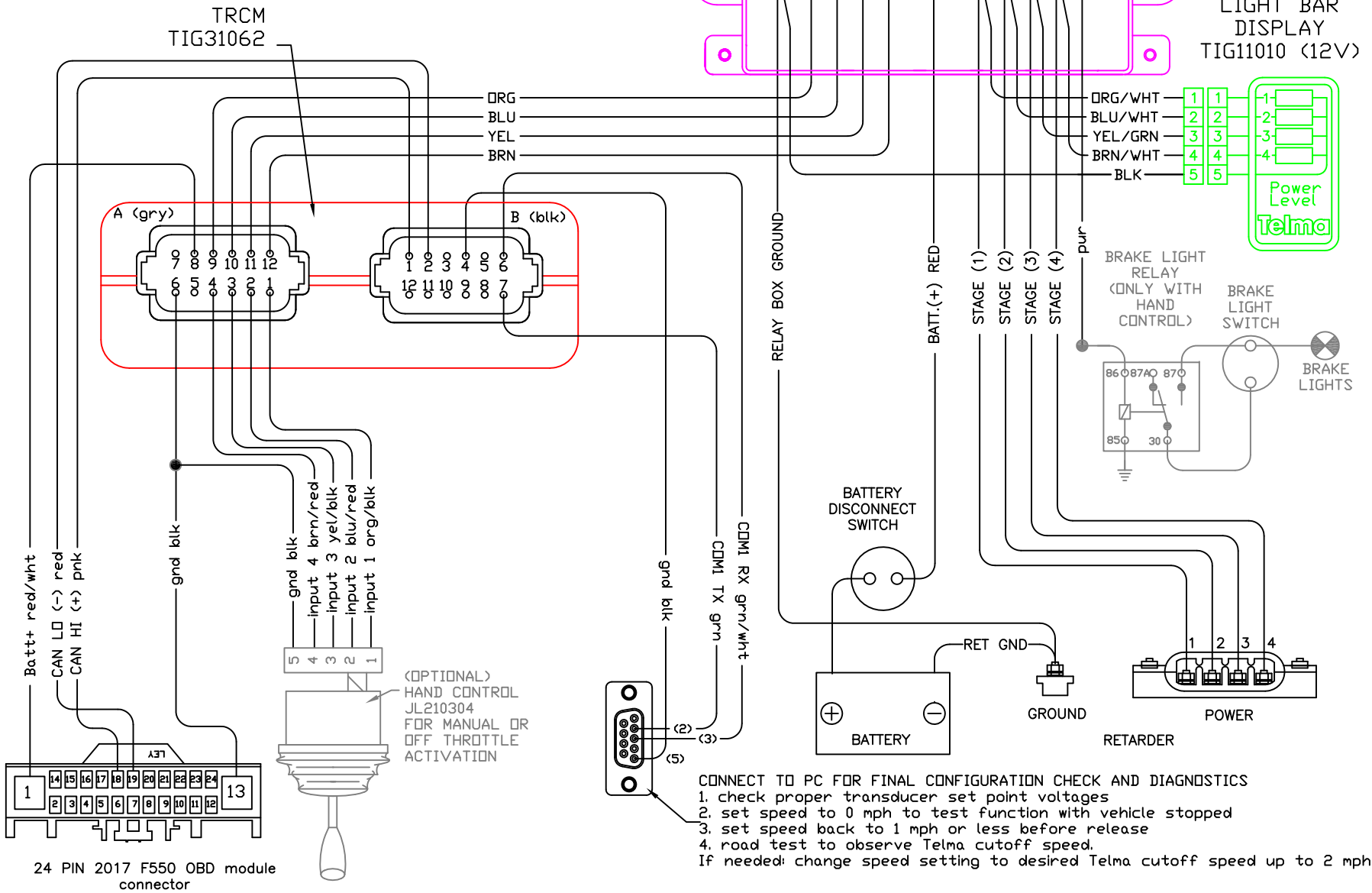
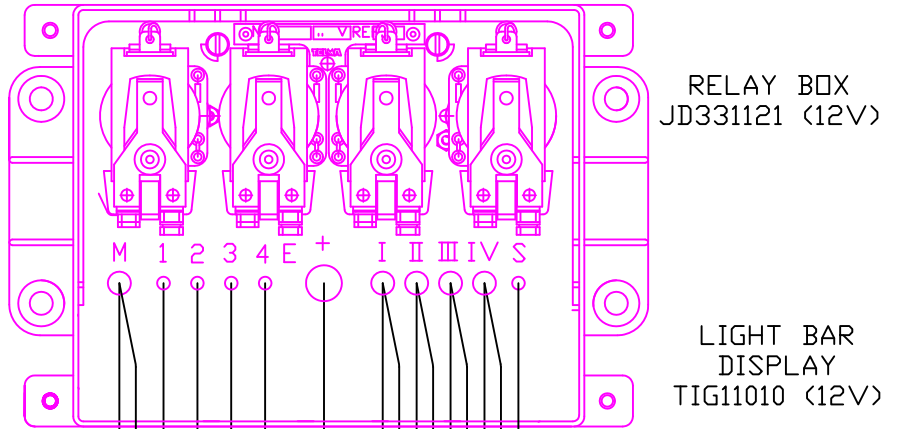


# TL114048 WIRING DIAGRAM 2017 FORD F550 14nov17jh

CAN control features:  
TRCM active outputs turn off under the following conditions.  
1) during ABS event  
(with progressive reactivation)  
2) Speed below 1 mph  
3) Throttle position greater than 1%  
4) Cruise Control is engaged  
(except 2012 F550 and G4500 gasoline)



CONNECT TO PC FOR FINAL CONFIGURATION CHECK AND DIAGNOSTICS

- check proper transducer set point voltages
- set speed to 0 mph to test function with vehicle stopped
- set speed back to 1 mph or less before release
- road test to observe Telma cutoff speed.

If needed: change speed setting to desired Telma cutoff speed up to 2 mph.