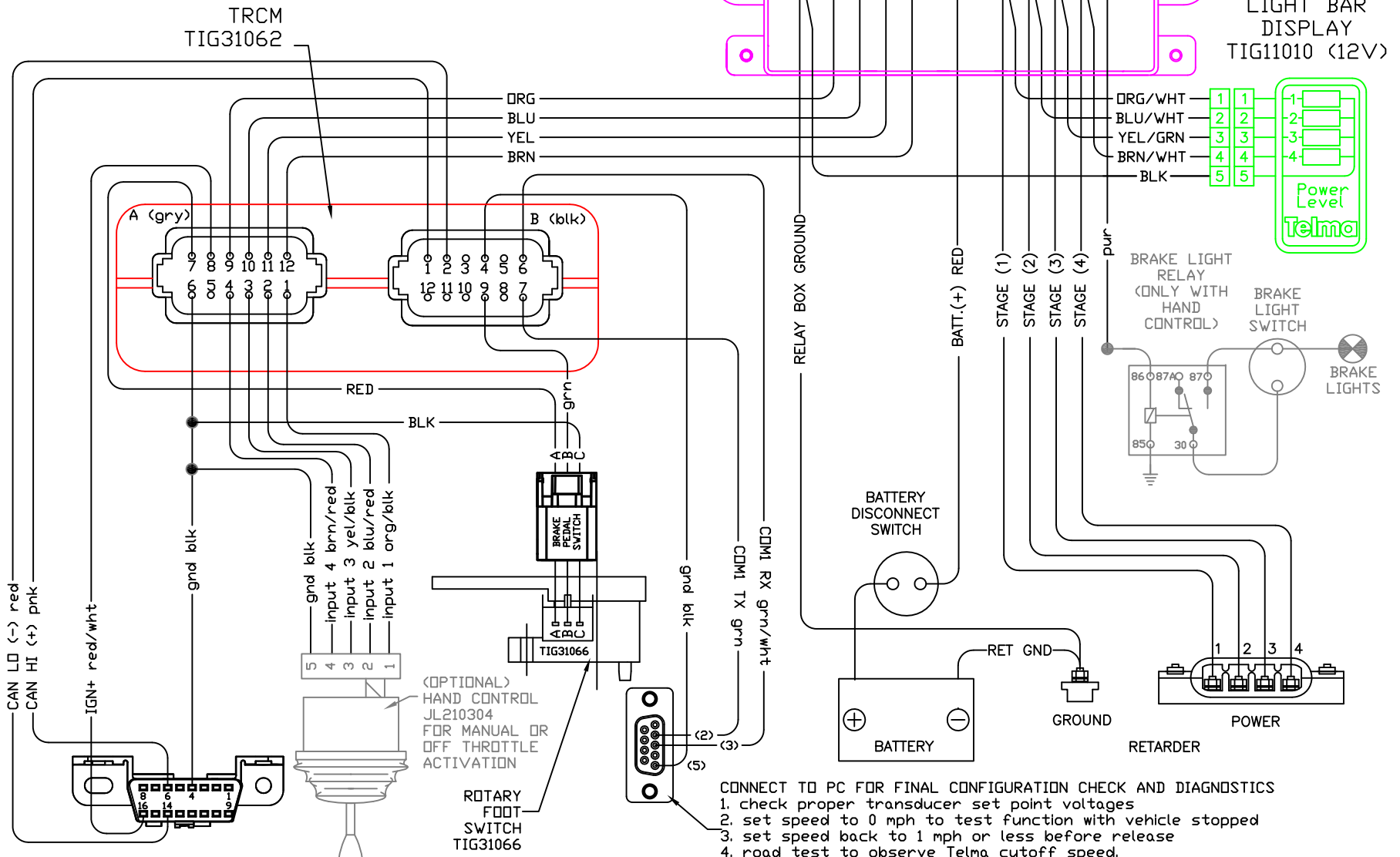
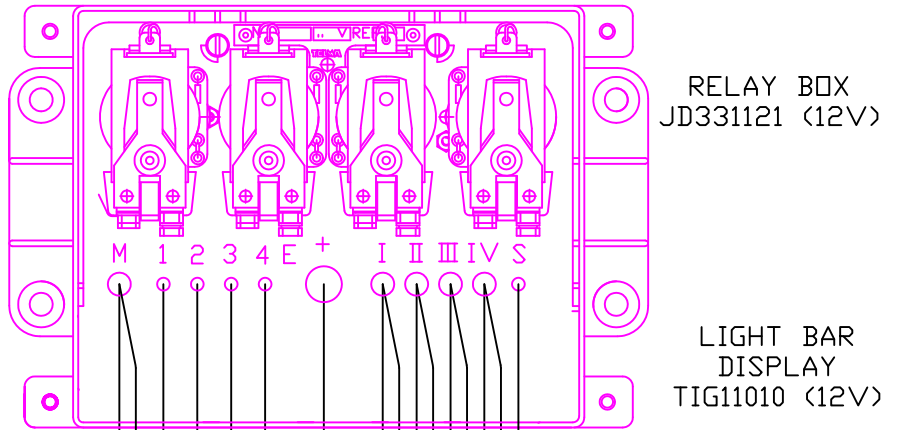


TL114045
 WIRING DIAGRAM WITH
 TRCM
 AND OBD2 with
 rotary foot switch
 design 2
 10nov16jh

CAN control features:
 TRCM active outputs turn off
 under the following conditions.
 1) during ABS event
 (with progressive reactivation)
 2) Speed below 1 mph
 3) Throttle position greater than 1%
 4) Cruise Control is engaged
 (except 2012 F550 and G4500 gasoline)



CONNECT TO PC FOR FINAL CONFIGURATION CHECK AND DIAGNOSTICS

1. check proper transducer set point voltages
2. set speed to 0 mph to test function with vehicle stopped
3. set speed back to 1 mph or less before release
4. road test to observe Telma cutoff speed.

If needed: change speed setting to desired Telma cutoff speed up to 2 mph.