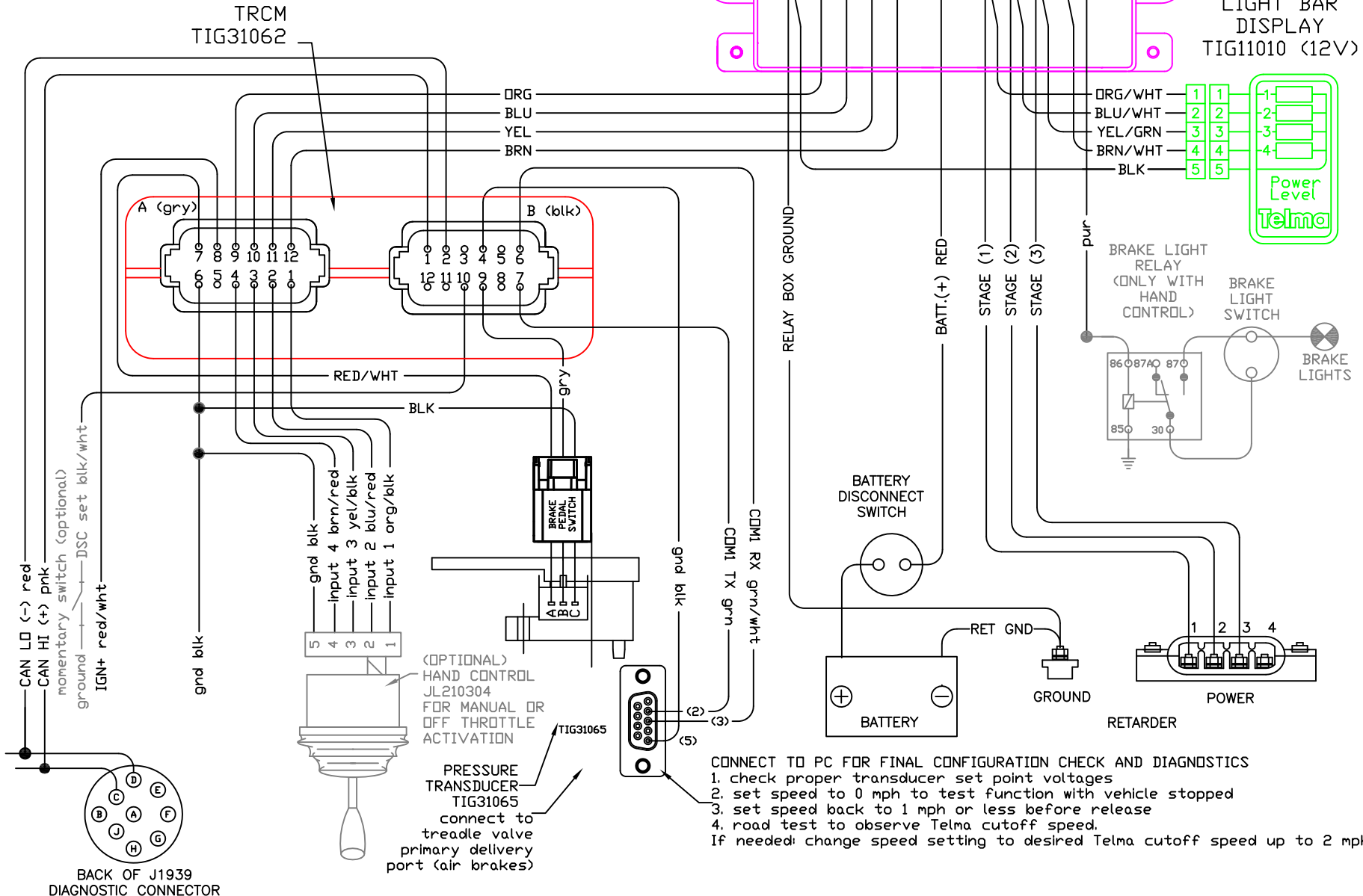
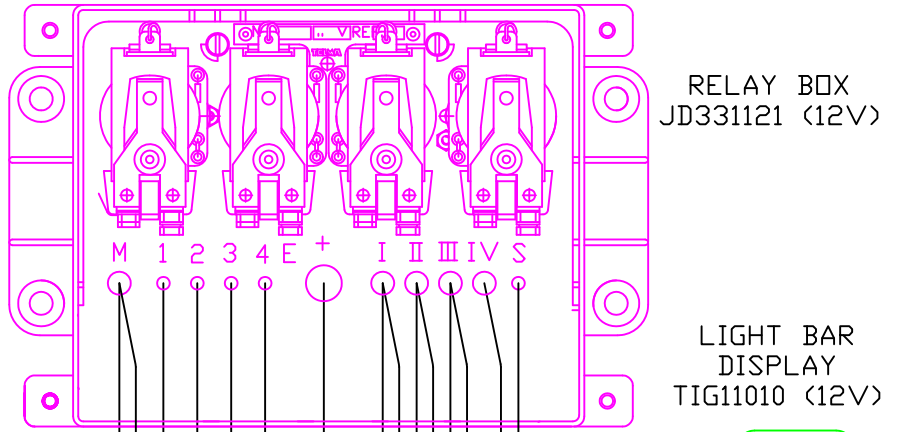


TL114043 WIRING DIAGRAM (3 stages) WITH TRCM AND J1939 with rotary switch 20mar15jh

CAN control features:
TRCM active outputs turn off
under the following conditions.
1) during ABS event
(with progressive reactivation)
2) Speed below 1 mph
3) Throttle position greater than 1%
4) Cruise Control is engaged



CONNECT TO PC FOR FINAL CONFIGURATION CHECK AND DIAGNOSTICS

1. check proper transducer set point voltages
2. set speed to 0 mph to test function with vehicle stopped
3. set speed back to 1 mph or less before release
4. road test to observe Telma cutoff speed.

If needed: change speed setting to desired Telma cutoff speed up to 2 mph.