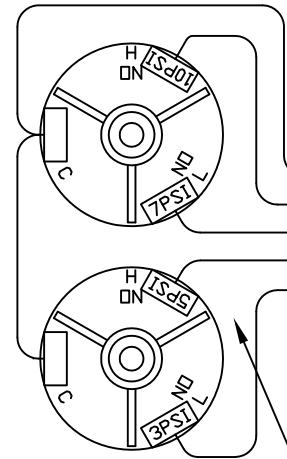
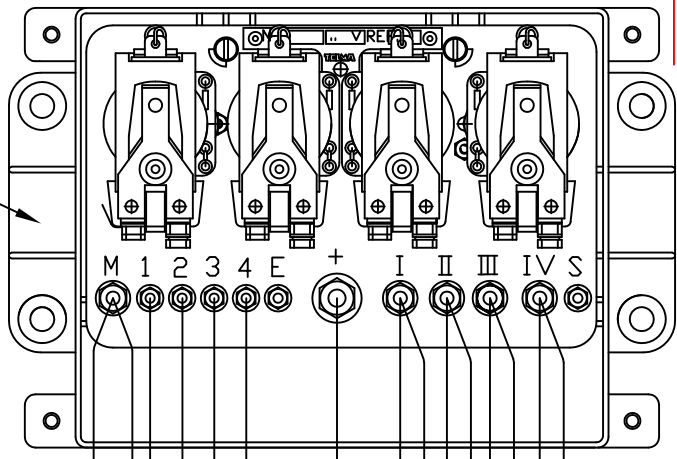
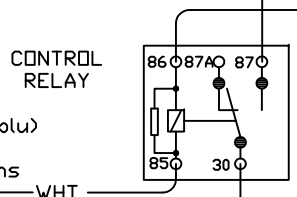


THIS DRAWING IS PROPRIETARY TO TELMA INC. RECEIPT OR POSSESSION CONFERS NO RIGHT TO USE THE SUBJECT MATTER OF THIS DRAWING OR TECHNICAL INFORMATION SHOWN; NOR THE RIGHT TO REPRODUCE THIS DRAWING OR ANY PART EXCEPT FOR THOSE SUPPLIERS OF TELMA INC. WHO RECEIVE A WRITTEN REQUEST FOR MANUFACTURE OR SIMILAR USE.

REVISIONS					
ZONE	LTR	DESCRIPTION	E.C.O.	DATE	APPROVAL

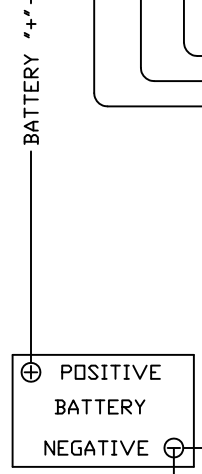


- 5 RED 18G
- 4 BRN 18G
- 3 YEL 18G
- 2 BLU 18G
- 1 ORG 18G

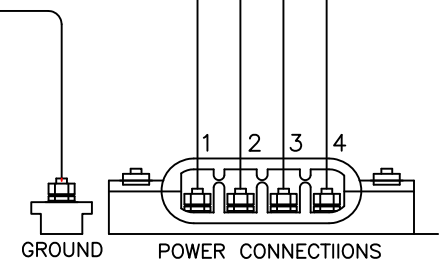
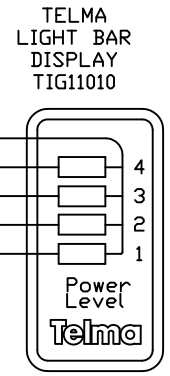


body controller connector 160 (blu) normally ground off under the following conditions  
 (1) below 2mph  
 (2) during "ABS active event"  
 (3) throttle position > 1%  
 (4) cruise control engaged

10 AMP FUSE → IGNITION +



- 5 BLK 18G
  - 4 BRN/WHT 18G
  - 3 YEL/GRN 18G
  - 2 BLU/WHT 18G
  - 1 ORG/WHT 18G
- STAGE (4)  
 STAGE (3)  
 STAGE (2)  
 STAGE (1)



Note: refer to TL115012 for more details

DRAWN BY:	HOUSAND	12sep11
CHECKED BY:		
ENGINEER:	HOUSAND	12sep11
REVISED BY:		
SUPERSEDES:		
DATE:	12sep11	

**Telma**  
 Precision Braking Systems

870 Linsky Blvd  
 Wood Dale, IL, U.S.A.  
 (647) 599-1098

NAME: TELMA FOOT CONTROL AIR NAV DIAMOND LOGIC

REV: DRWG. NUMBER: **TL14030**

SCALE: NTS SHEET: 1 OF 1