

Technical Service Bulletin

SUBJECT: General Guidelines for rotary foot switch installation and adjustment

Products Affected: Telma installed on vehicles with hydraulic brakes that do not broadcast brake pedal position on the CANBus.

Effective Date: 27jun18

Telma is committed to a philosophy of continuous improvement as a way of enhancing the end-user's experience with our product.

The following information describes how to install and adjust the Telma rotary foot switch if needed for vehicles with hydraulic brakes.

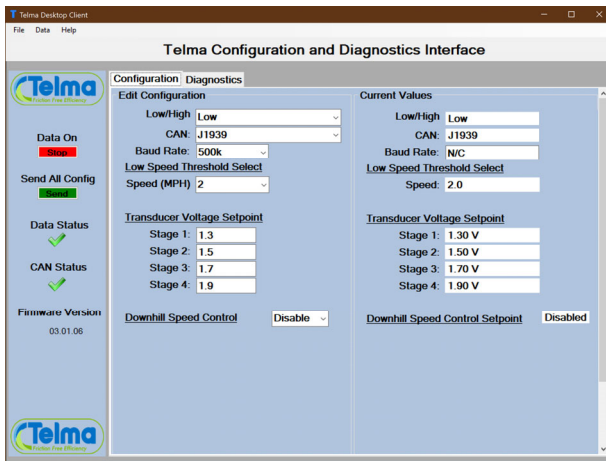
1. Install the rotary foot switch bracket TIB01040. This is a generic bracket and may need to be modified for your application.
2. Install the rotary switch to the bracket so that the spring-loaded arm is resting against the back of the brake pedal. The arm should be almost to the beginning of its travel but not all the way to avoid damaging the switch. It may be necessary to move the switch towards the firewall.
3. To do this follow the steps below.
 - a. Drill a new hole for the switch locating pin towards the firewall.
 - b. Install the switch in the new locating hole and rotate until the arm which is against the back of the pedal is almost at the beginning of its travel.
 - c. Mark and drill the new hole for the mounting screw.



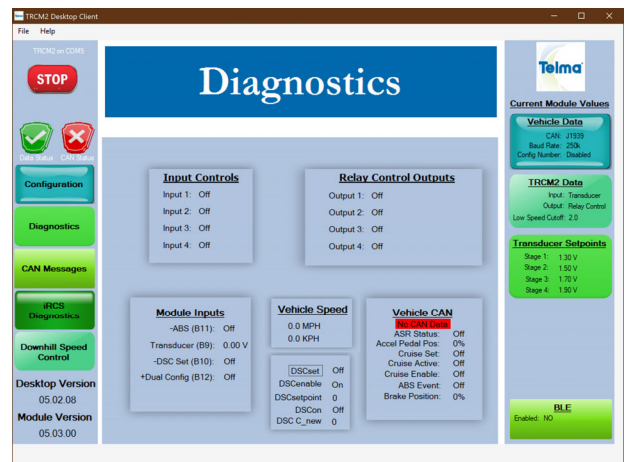
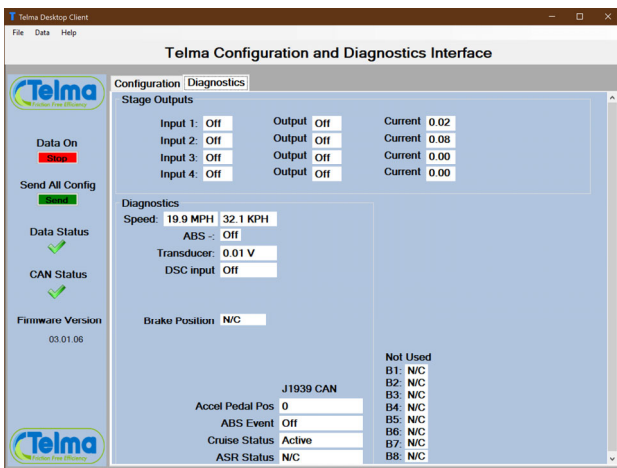
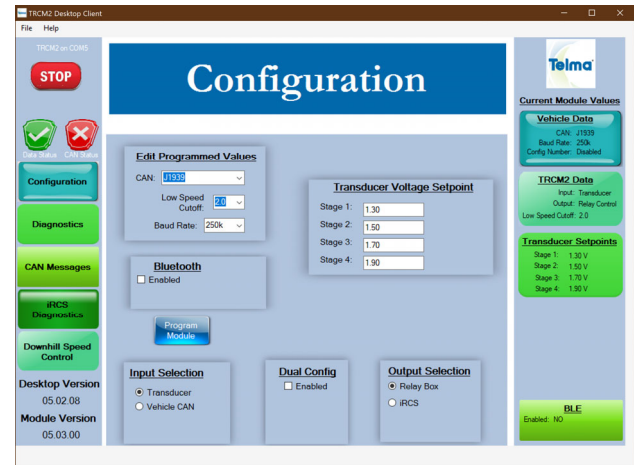
If you have any questions, contact Telma customer support at 800 797-7714, go to the Telma Web site at www.telmausa.com, or send an email to engineering@telmacse.com with your questions 24 hours a day / 7 days a week.

4. Connect the laptop to the TRCM and open the software. The TRCM should be powered on.
5. In the diagnostics screen record transducer voltage when brake pedal is NOT applied. None of the transducer voltage settings should be below this value to avoid the Telma from coming on when brake is not applied.
6. Record the transducer voltage in the diagnostics screen when you push the brake pedal with your hand until you start to feel resistance from the service brakes. Stage 4 voltage setting should be below this value in order to have the Telma activate completely before the service brakes.

TRCM1



TRCM2



If you have any questions, contact Telma customer support at 800 797-7714, go to the Telma Web site at www.telmausa.com, or send an email to engineering@telmacse.com with your questions 24 hours a day / 7 days a week.

This document is the exclusive property of TELMA RETARDER INC. It cannot be copied, modified, forwarded, or given to any third party without prior agreement from TELMA RETARDER INC. Any infringement will immediately involve legal action.



TELMA RETARDER, INC.

Tel: (847) 593-1098 • Fax: (847) 593-3592

www.TelmaUSA.com

TL105096

Revised: 12mar21jh

7. Set the voltage settings for stages 1-2-3-4 between these two values and equally spaced. For example if voltage is zero when brake pedal is not applied and reaches 5 volts when you feel resistance from the service brakes you can set the 4 stages to 1, 2, 3, 4 volts to start.
8. Road test to check if the Telma stages apply progressively and before the service brakes.
 - a. To make the Telma apply more aggressively reduce the voltage settings so the Telma stages will turn on sooner (e.g. 1, 1.5, 2, 2.5 instead of 1, 2, 3, 4).
 - b. If the Telma does not apply progressively (all stages seem to come on at once) increase the voltage between stage settings keeping in mind not to exceed the voltage you observed when you started to feel resistance from the service brakes (e.g. 1, 2.5, 3.5, 4.5).
9. Below is the list of parts to order if a rotary foot switch needs to be installed on your vehicle.

description	part number	QTY
rotary switch bracket	TIB01040	1
Rotary Switch Harness	TID31004	1
M4-0.7 x 20mm DIN 933 Class 8.8 Zinc Cap Screw	TIF01067	1
M4 DIN 137 Zinc Wave Washer	TIF01068	1
Rotary Foot Switch	TIG31066	1

This document is the exclusive property of TELMA RETARDER INC. It cannot be copied, modified, forwarded, or given to any third party without prior agreement from TELMA RETARDER INC. Any infringement will immediately involve legal action.

If you have any questions, contact Telma customer support at 800 797-7714, go to the Telma Web site at www.telmausa.com, or send an email to engineering@telmacse.com with your questions 24 hours a day / 7 days a week.