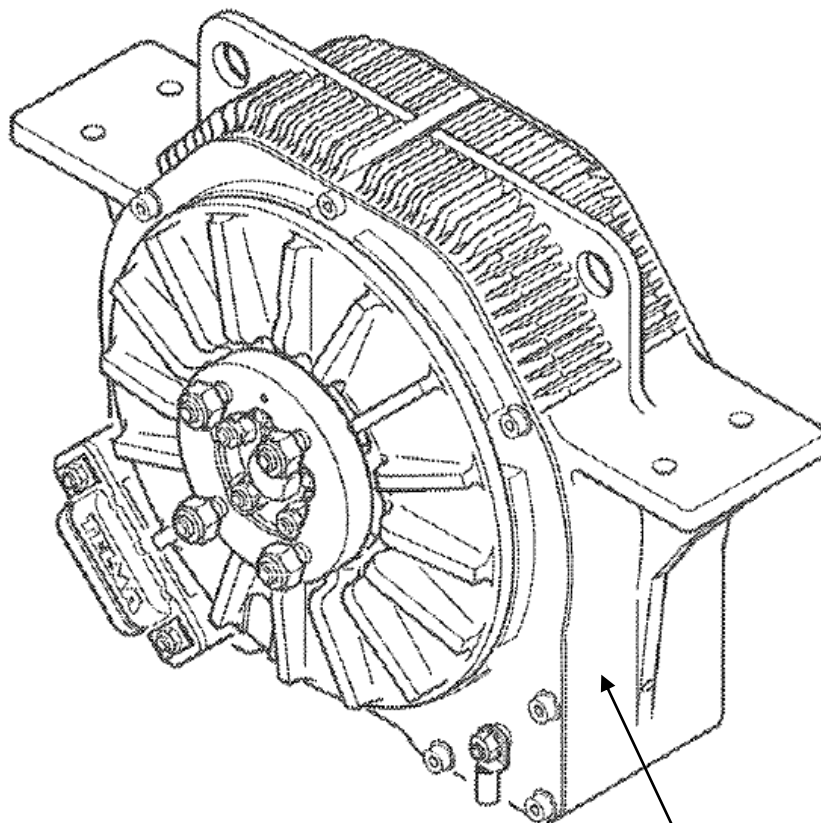


SPARE PARTS CATALOGUE

AXIAL AE30-32 AE30-35 RETARDERS

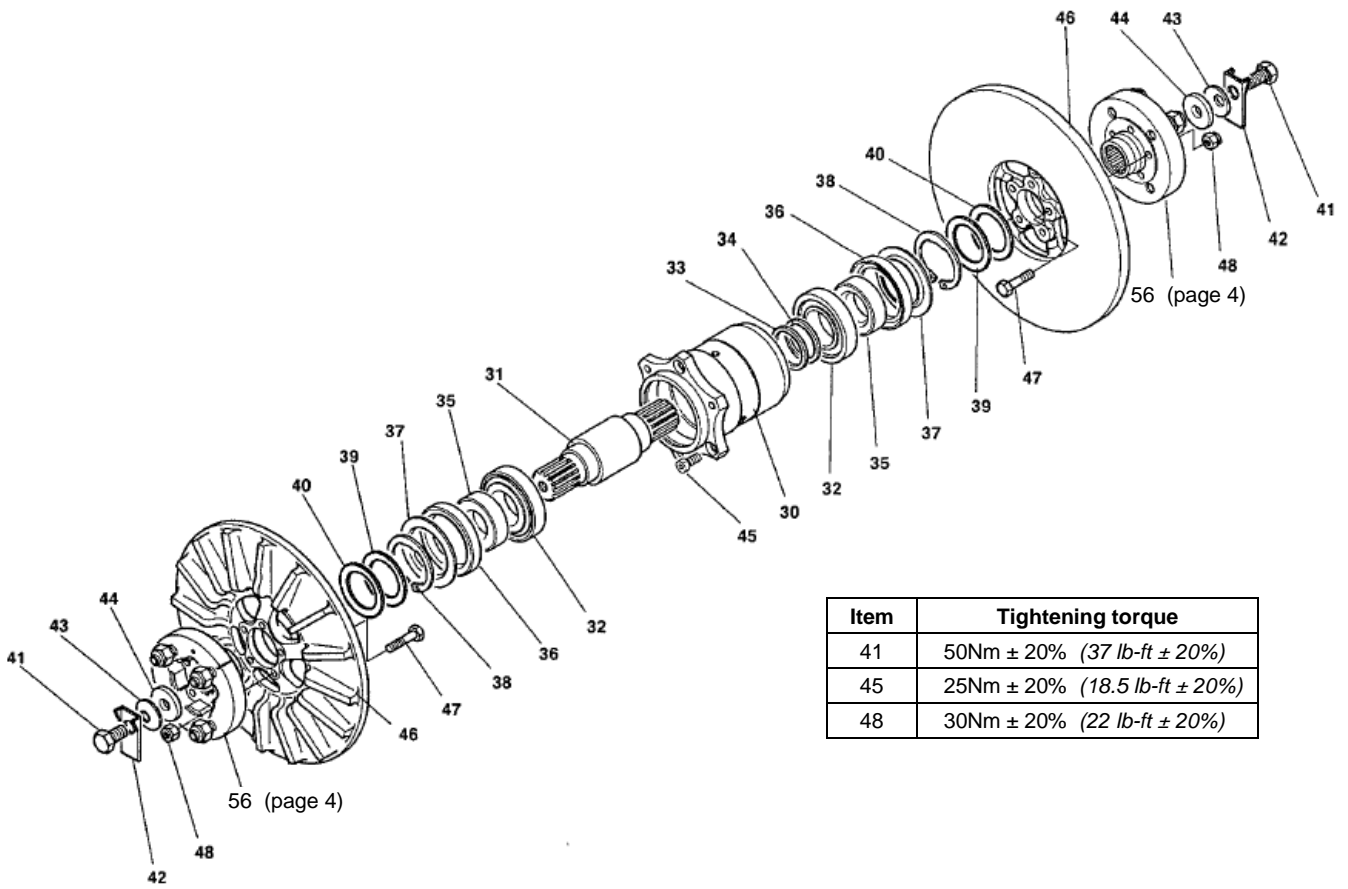
AE30-32
AE30-35

part number = EC3111xx
part number = EC2111xx



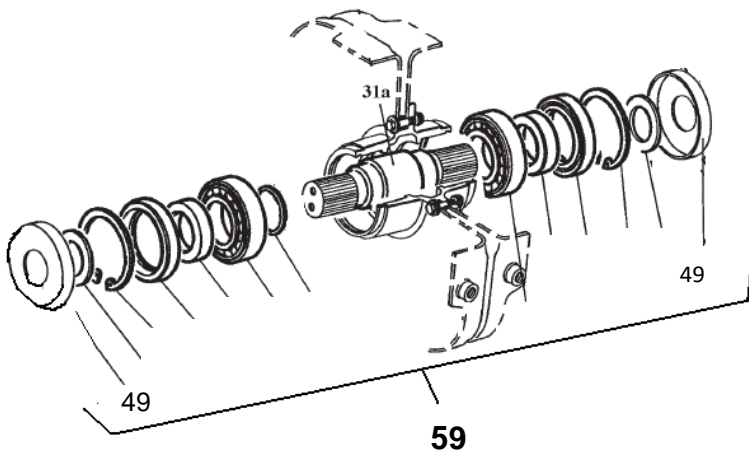
Engraved part number
Engraved serial number

ROTATING COMPONENTS



Item	Tightening torque
41	50Nm ± 20% (37 lb-ft ± 20%)
45	25Nm ± 20% (18.5 lb-ft ± 20%)
48	30Nm ± 20% (22 lb-ft ± 20%)

Complete hub assembly (item 59)



Item	Description	Qty	TELMA n°
1	Complete stator with fitted shaft and coils (includes all items except 41-42-43-44-46-47-48-56)	1	VB 107 977 (AE30-32 12V) VB 107 975 (AE30-35 12V) VB 107 976 (AE30-35 24V)
39 + 40	Set of air gap adjusting shims including: 39 Teflon washer (0.70mm) 40 set of adjusting shims	2 1 1	VB 202 044 / /
52	Set of shaft end fasteners including: 41 screw M12 42 tab washer (<i>VA1002093 = set of 20 tab washers VB515107</i>) 43 spring washer 44 pressure washer	2 1 1 1 1	VA1001125 / / / /
59	Complete hub assembly with fitted shaft including: 30 hub 31 shaft 32 tapered roller bearing 33 spacer ring 35 seal race 36 seal with double lip 45 set of hub fasteners set of pole shoe plate fasteners including: 14 cap socket screw M8x1.25mm (page 5) 15 cap socket screw M8x1.25mm (page 5) 52 set of shaft end fasteners including: 41 screw M12 42 tab washer (<i>VA1002093 = set of 20 tab washers VB515107</i>) 43 spring washer 44 pressure washer	1 1 1 1 1 2 2 1 1 30 3 2 1 1 1 1	VB 107 555 / / / / / / / / / / VA1001313 / / VA1001125 / / / /
61	Set of 2 rotors including: 39 + 40 set of air gap adjusting shims 46 rotor 47 + 48 set of 5 screws and nuts for rotor securing to flange 49 deflector 52 set of shaft end fasteners	1 1 2 2 2 1	VA1001113 VB 202 044 / VA1001127 / VA1001125

COUPLING FLANGE SETS (item 56)

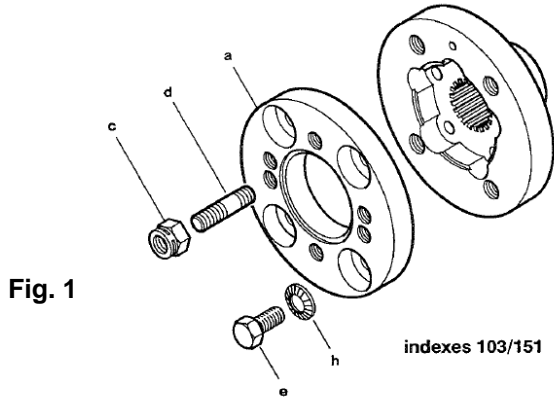


Fig. 1

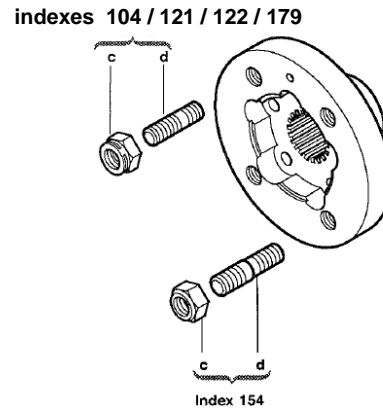


Fig. 2

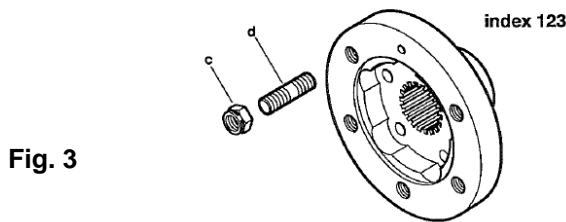


Fig. 3

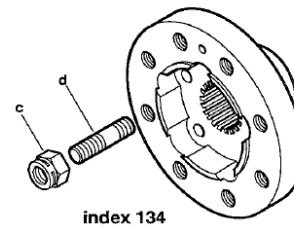
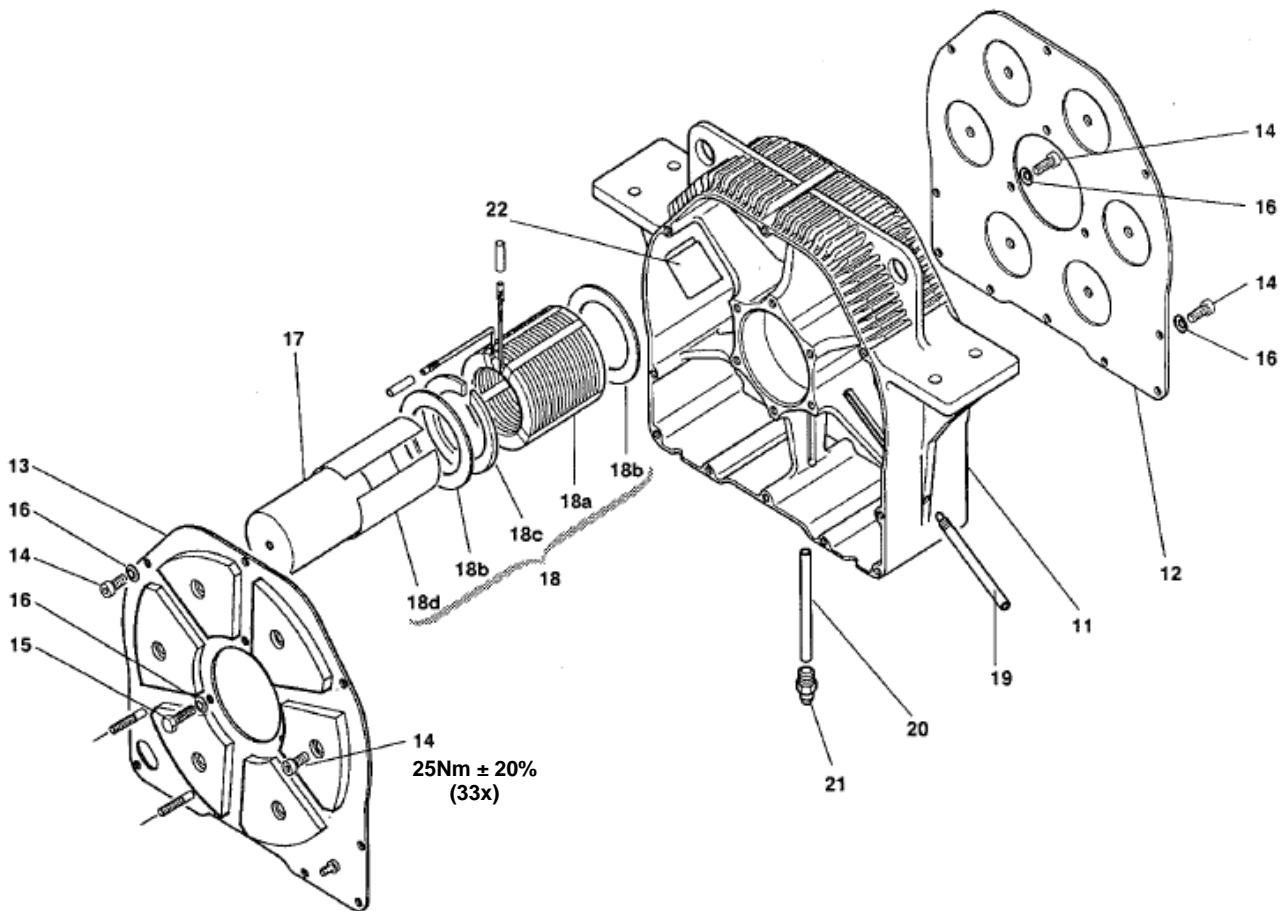


Fig. 4

Index	1 flange + fasteners assembly	Qty per retarder	Fig.	Set of included studs item d		Set of included nuts Item c	
				Qty	TELMA n°	Qty	TELMA n°
103	VB 107 331	2	1	1	10000xxx set of x studs VF 131 190 (4 x M10x1.50mm)	1	<u>10000059</u> set of 8 nuts VF120120 (4 x M10x1.50mm)
104	VB 107 327	2	2	1	<u>10000084</u> set of 4 studs VF 131 300 (4 x M12x1.50mm)	1	<u>10000194</u> set of 8 nuts VF120160 (4 x M12x1.50mm)
121	VB1001008	2	2	1	<u>10000084</u> set of 4 studs VF 131 300 (4 x M12x1.50mm)	1	<u>10000194</u> set of 8 nuts VF120160 (4 x M12x1.50mm)
122	VB 107 985	2	2	1	<u>10000240</u> set of 4 studs VF 131 150 (4 x M10x1.00mm)	1	<u>10000193</u> set of 8 nuts VF120140 (4 x M10x1.00mm)
123	VB 107 329	2	3	2	<u>10000240</u> set of 4 studs VF 131 150 (6 x M10x1.00mm)	1	<u>10000193</u> set of 8 nuts VF120140 (6 x M10x1.00mm)
128	VB 107 628	2		1	<u>10000080</u> set of 4 studs VF 131 110 (4 x M10x1.00mm)	1	<u>10000193</u> set of 8 nuts VF120140 (4 x M10x1.00mm)
134	VB 107 330	2	4	1	10000xxx set of x studs VF 131 140 (8 x M10x1.50mm)	1	<u>10000059</u> set of 8 nuts VF120120 (8 x M10x1.50mm)
154	VB 107 328	2	2	1	10000xxx set of x studs VF 130 120 (4 x M12x1.50mm - 7/16")	1	<u>10000166</u> set of 4 nuts VF120370 (4 x 7/16")
179	VB 107 629	2	2	1	<u>10000240</u> set of 4 studs VF 131 150 (4 x M10x1.00mm)	1	<u>10000193</u> set of 8 nuts VF120140 (4 x M10x1.00mm)

IMPORTANT: the studs must be degreased and fitted in the flanges with locking compound. It is advised to replace the self locking nuts, item c, each time the drive shafts are being removed.

STATOR COMPONENTS

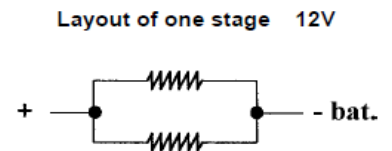
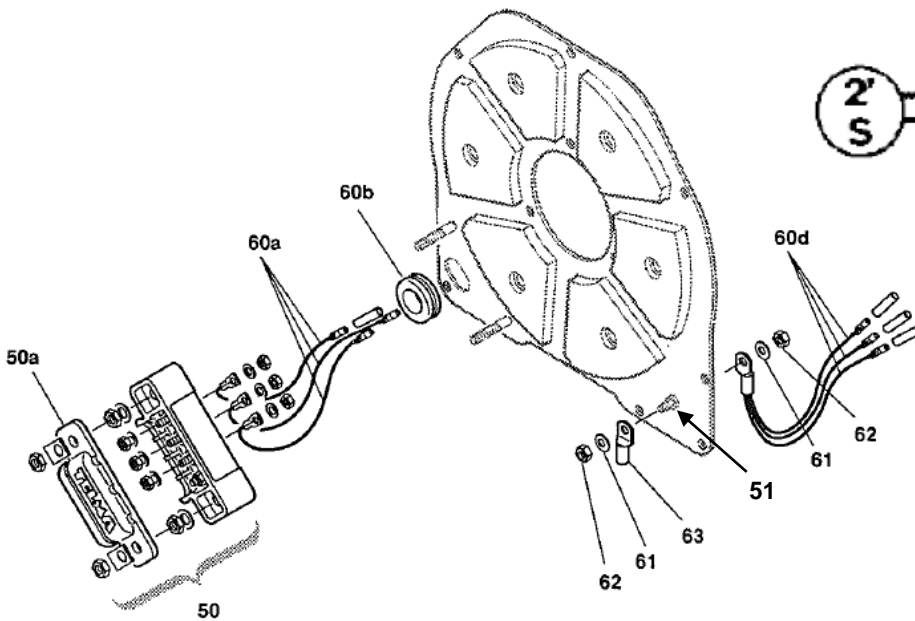
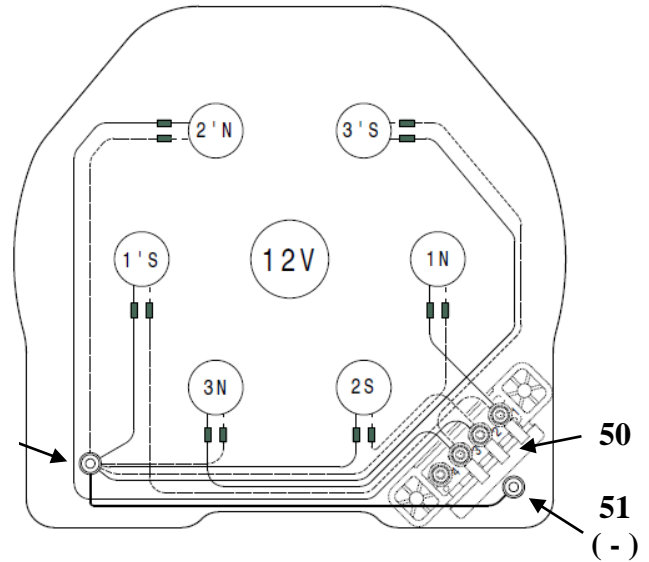
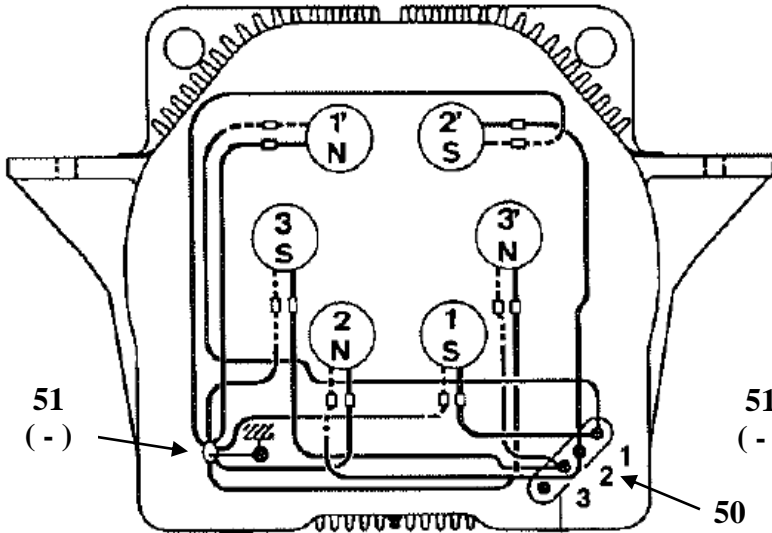


Item	Description	Qty	TELMA n°
11	Stator housing	1	/
12	Pole shoe plate (front)	1	VA1001760
13	Pole shoe plate (rear, connecting block side)	1	VA1001761
14 + 15	Set of pole shoe plate fasteners (M8 x 1.25mm)	1	VA1001313
17	Core	6	/
18	Coil assembly (including items 18a to 18d): - for AE30-32 (Cu) - for AE30-35 (Al)	6 6	VD 310 577 VD 310 538
19	Vent tube	1	/
20	Greasing pipe (fitted until serial number 408394 - 03 rd October, 2005)	1	VB 500 230
21	Grease nipple (fitted until serial number 408394 - 03 rd October, 2005)	1	VF 500 100
/	TELMACO grease cartridge (417g)	/	VJ 200 340
22	Set of 8 coil outer insulators	1	VB 202 036

AE30-35 (12V, type EC211xxx) 12V internal wiring

1st generation with 1 negative terminal (→ 2010)

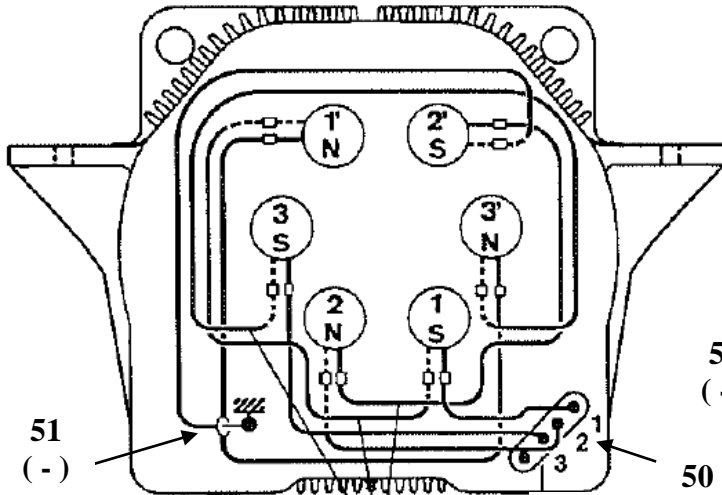
2nd generation with 2 negative terminals (2010 → 2017)



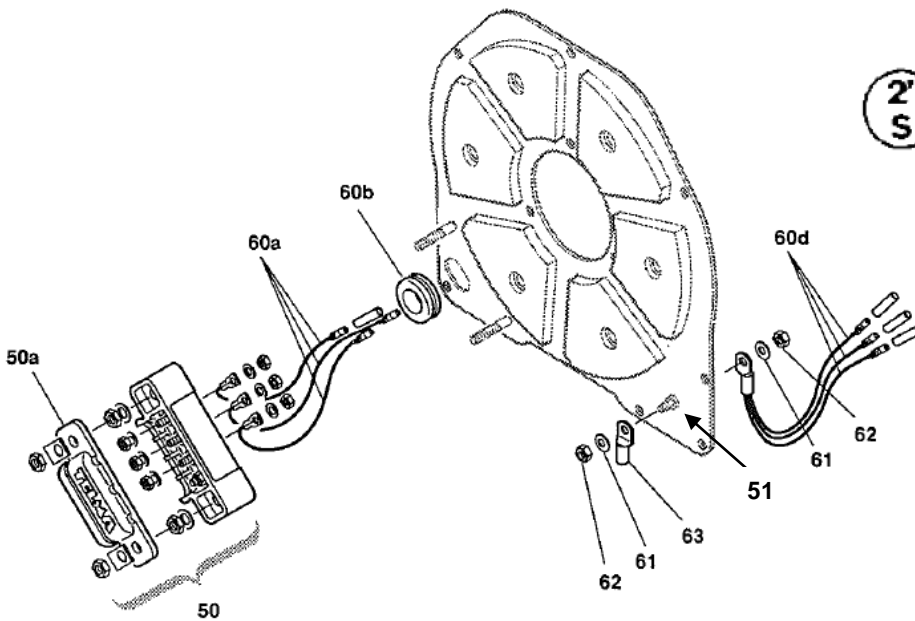
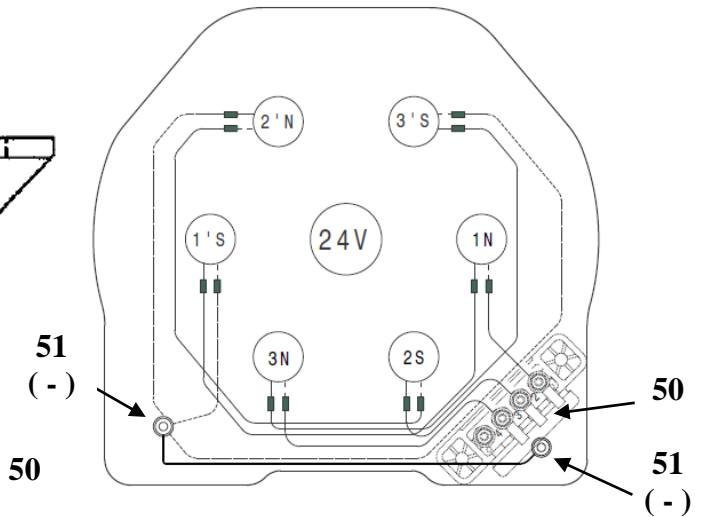
Item	Description	Qty	TELMA n°
60	Complete internal wiring set including: 50 1 connecting block assembly with lid 51 2 negative return assemblies 60a 1 set of connecting block wires 60b 1 cable conduit 60d 1 set of return wires	1	VD1000367 VD 408 041 VD 408 597 / / /

AE30-32 (12V, type EC311xxx)	24V internal wiring
AE30-35 (24V, type EC212xxx)	24V internal wiring

1st generation with 1 negative terminal (→ 2010)



2nd generation with 2 negative terminals (2010 → 2017)

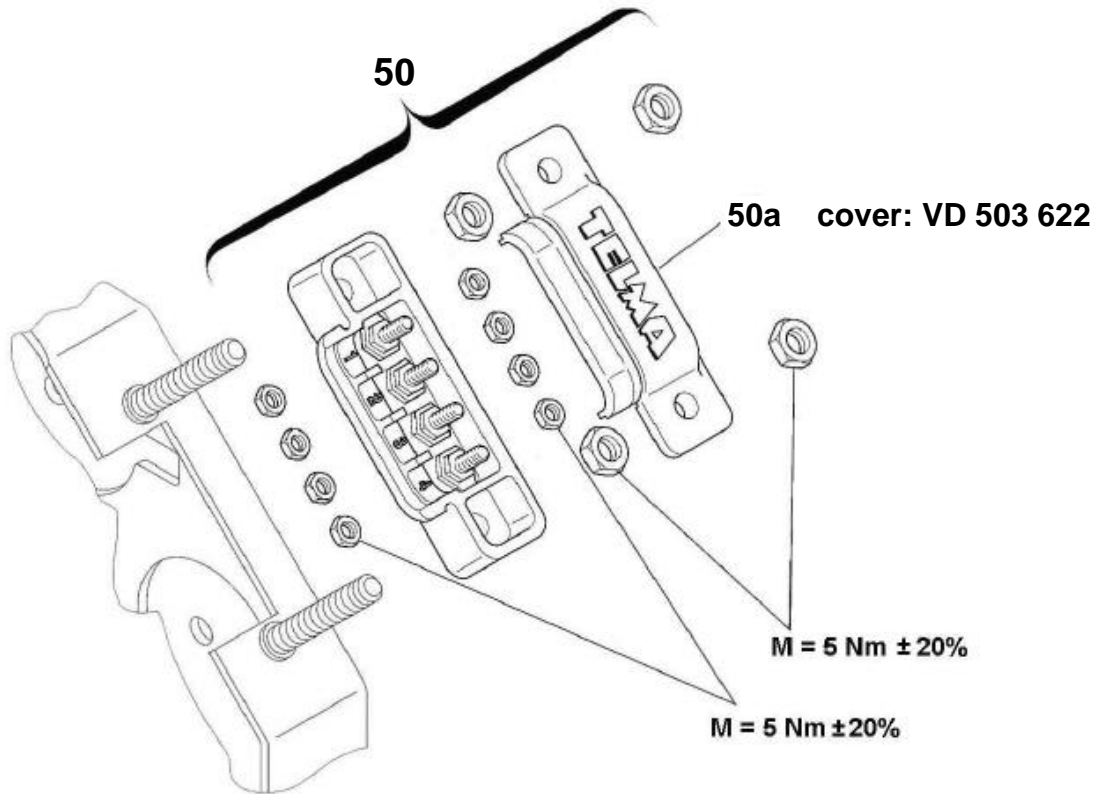


Layout of one stage 24V

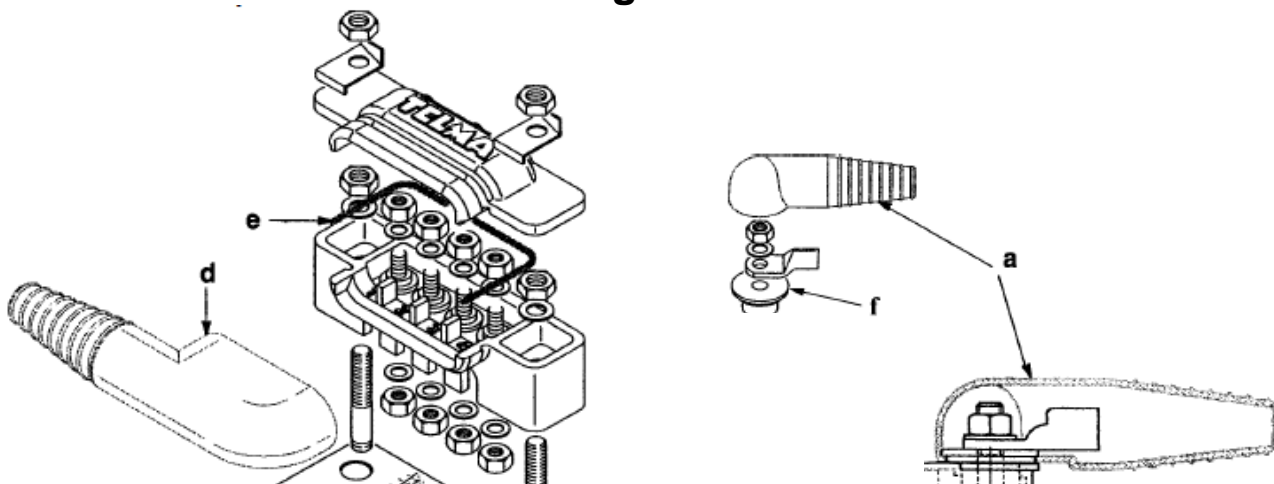
+ ——— - bat.

Item	Description	Qty	TELMA n°
60	Complete internal wiring set: including: 50 1 connecting block assembly with lid 51 2 negative return assemblies 60a 1 set of connecting block wires 60b 1 cable conduit 60d 1 set of return wires	1	VD1000368 VD 408 041 VD 408 597 / / /

Connecting block VD 408 041 (item 50)

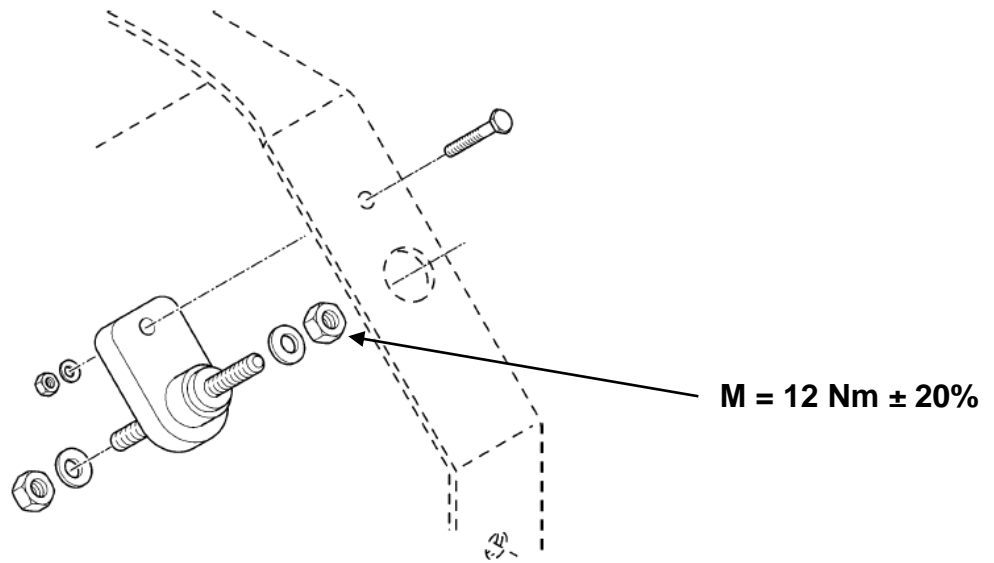


Silicone boots for cable sealing



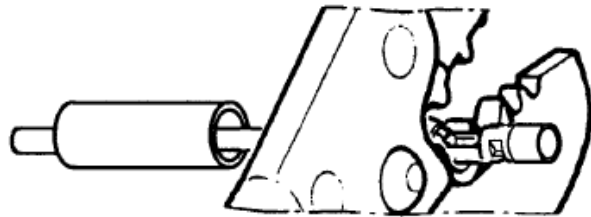
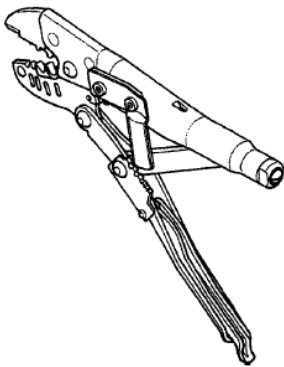
Item	Description	Sealing kit VB 107 377	Sealing kit VB 107 556
		Quantity	
a	Silicone boot for return terminal	/	1
d	Silicone boot for connecting block	1	1
e	Silicone grommet	1	1
f	Stepped washer	/	1

Insulated return terminal VD 408 597 (item 51)



Crimping tool:


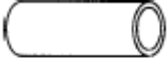

in certain cases, it can be necessary to replace damaged crimped connectors. Only genuine TELMA parts (see below repair kit VD 408 491) and suitable crimping tool should be used.



IMPORTANT:

remove the insulation varnish of the coil wire before crimping the crimp connector.

Repair kit VD 408 491

	Quantity	Description
	16	Crimp connector
	16	Viton shrink sleeve
	8	Red shrinking sleeve