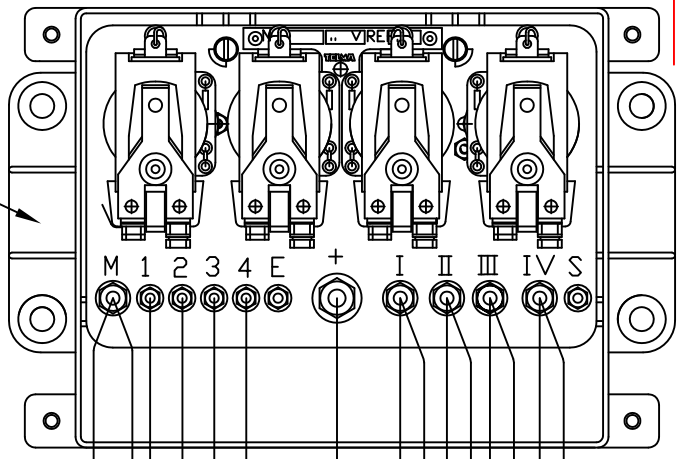


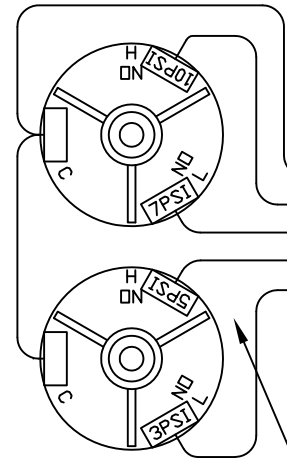
THIS DRAWING IS PROPRIETARY TO TELMA INC. RECEIPT OR POSSESSION CONFERS NO RIGHT TO USE THE SUBJECT MATTER OF THIS DRAWING OR TECHNICAL INFORMATION SHOWN; NOR THE RIGHT TO REPRODUCE THIS DRAWING OR ANY PART EXCEPT FOR THOSE SUPPLIERS OF TELMA INC. WHO RECEIVE A WRITTEN REQUEST FOR MANUFACTURE OR SIMILAR USE.

| REVISIONS | | | | | |
|-----------|-----|-------------|--------|------|----------|
| ZONE | LTR | DESCRIPTION | E.C.O. | DATE | APPROVAL |
| | | | | | |
| | | | | | |



TELMA RELAY BOX JD331121

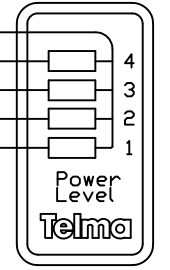
TELMA LIGHT BAR DISPLAY TIG11010



TID11012 PRESSURE SWITCH MANIFOLD ASSEMBLY

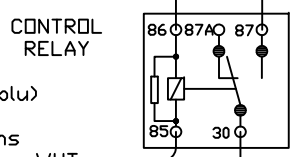
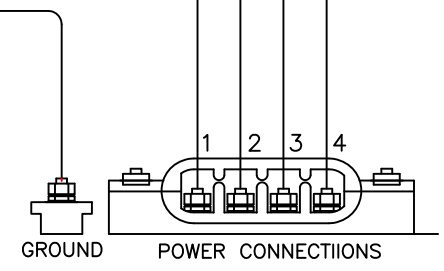
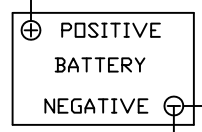
- 5 RED 18G
- 4 BRN 18G
- 3 YEL 18G
- 2 BLU 18G
- 1 ORG 18G

- 5 BLK 18G
- 4 BRN/WHT 18G
- 3 YEL/GRN 18G
- 2 BLU/WHT 18G
- 1 ORG/WHT 18G



- STAGE (4)
- STAGE (3)
- STAGE (2)
- STAGE (1)

BATTERY "+"



body controller connector 160 (blu) normally ground off under the following conditions
 (1) below 2mph
 (2) during "ABS active event"
 (3) throttle position > 1%
 (4) cruise control engaged

10 AMP FUSE → IGNITION +

Note: refer to TL115012 for more details

| | | |
|-------------|---------|---------|
| DRAWN BY: | HOUSAND | 12sep11 |
| CHECKED BY: | | |
| ENGINEER: | HOUSAND | 12sep11 |
| REVISED BY: | | |
| SUPERSEDES: | | |
| DATE: | 12sep11 | |

Telma
 Precision Braking Systems

870 Linsky Blvd
 Wood Dale, IL, U.S.A.
 (847) 688-1088

NAME: TELMA FOOT CONTROL AIR NAV DIAMOND LOGIC

REV: DRWG. NUMBER: **TL14030**

SCALE: NTS SHEET: 1 OF 1