



Technical Service Bulletin

SUBJECT: Foot Switch Elimination for hydraulic brake light truck applications

Products Affected: New Installation kits for Ford E Series, Ford F Series chassis as well as Chevrolet G4500

Effective Date: 1apr17

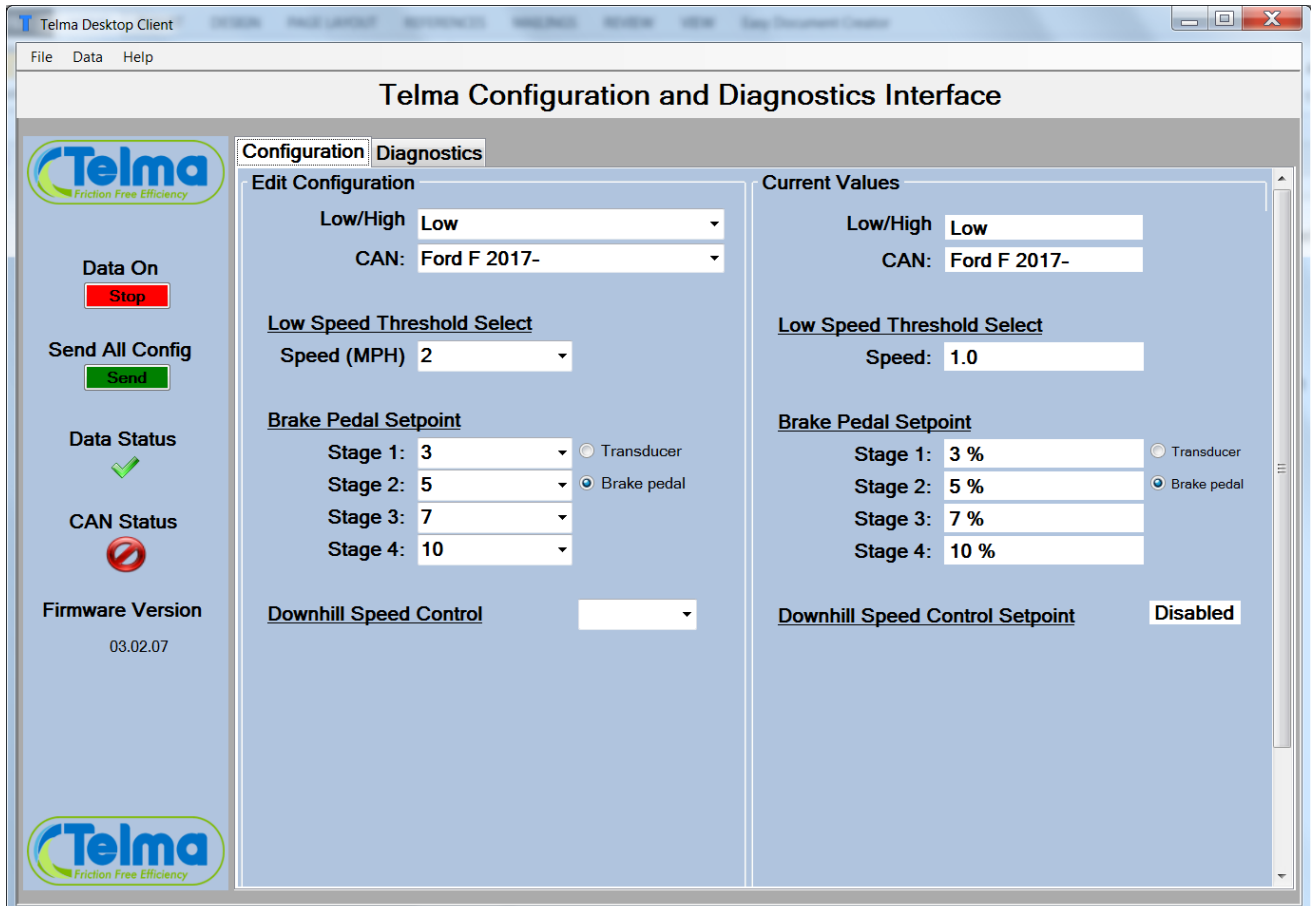
Telma is committed to a philosophy of continuous improvement as a way of enhancing the end-user's experience with our product.

We are very happy to announce that it will no longer be necessary to install the rotary switch and bracket for Telma foot control on light truck chassis including Ford E Series, Ford F Series, and Chevrolet G4500 chassis.

This change will start with kits shipped beginning April 1st, 2017.

Driver input for brake pedal position will now be obtained from the brake pedal position message broadcast on the CANBus.

Below is a screen shot of the updated Telma Desktop Client 03.02.07 and firmware version 03.02.07.



This document is the exclusive property of TELMA RETARDER INC. It cannot be copied, modified, forwarded, or given to any third party without prior agreement from TELMA RETARDER INC. Any infringement will immediately involve legal action.