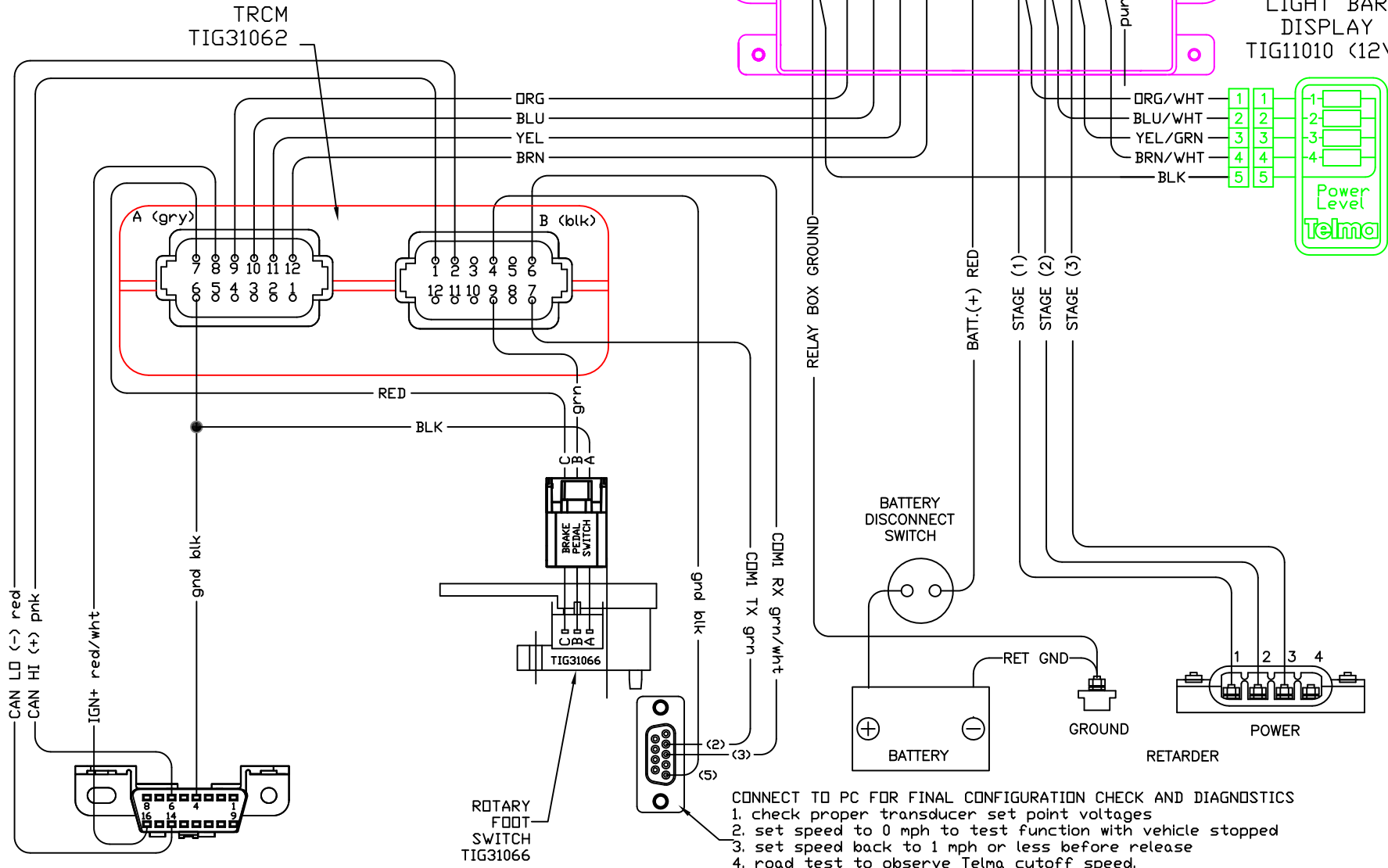
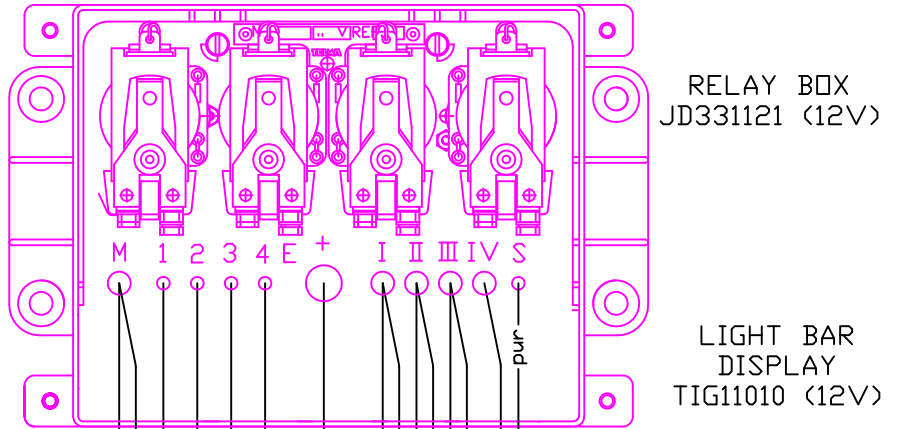


# TL114042 WIRING DIAGRAM (3 stages) WITH TRCM AND OBD2 with rotary switch 1feb16jh

CAN control features:  
TRCM active outputs turn off under the following conditions.  
1) during ABS event  
    (with progressive reactivation)  
2) Speed below 1 mph  
3) Throttle position greater than 1%  
4) Cruise Control is engaged  
    (except 2012 F550 and G4500 gasoline)



CONNECT TO PC FOR FINAL CONFIGURATION CHECK AND DIAGNOSTICS

1. check proper transducer set point voltages
2. set speed to 0 mph to test function with vehicle stopped
3. set speed back to 1 mph or less before release
4. road test to observe Telma cutoff speed.

If needed: change speed setting to desired Telma cutoff speed up to 2 mph.