

Technical Service Bulletin

SUBJECT: J1939 Connection on PACCAR Vehicles with Green Diagnostics Connector

Products Affected: All Telma products installed on PACCAR vehicles

Effective Date: 27jun18

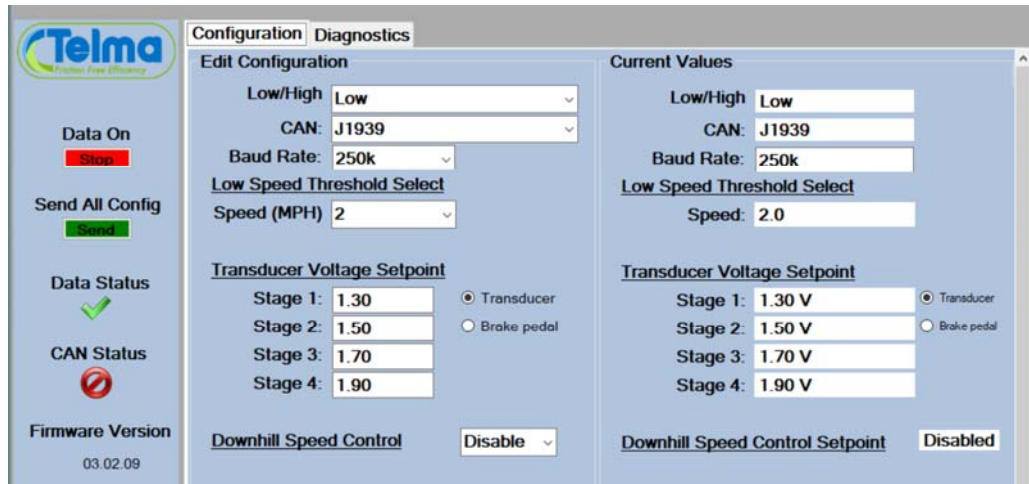
Telma is committed to a philosophy of continuous improvement as a way of enhancing the end-user's experience with our product.

The following information is important for Telma installations on PACCAR vehicles with green diagnostics connector.

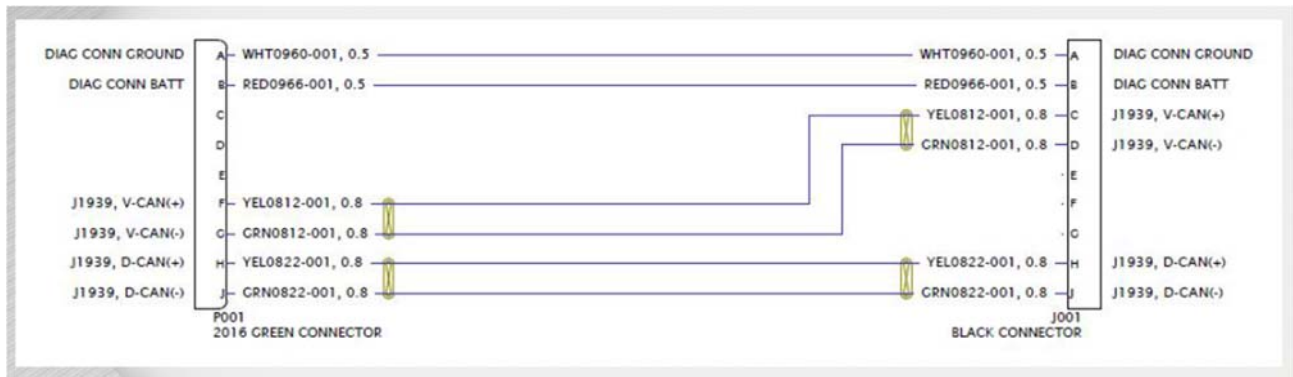
PACCAR has changed the CANBus wire positions for their vehicles equipped with a green diagnostics connector. J1939 CAN connection is now on pins F (CAN HI, yellow wire) and pin G (CAN LO, green wire). These wires are marked as V-CAN. When making the J1939 connection for the Telma system connect the Telma pink wire marked CAN HI to the yellow wire in position F of the vehicle diagnostics connector and the Telma red wire marked CAN LO to the green wire in position G of the vehicle diagnostics connector.

Set the Baud rate to 250k in the Telma Desktop Client

Refer to wiring diagram [TL134069](#) for more details. Below is a screen shot of the Telma Desktop configuration.



Below is the comparison between the previous black PACCAR diagnostics connector and the newer PACCAR green diagnostics connector.



If you have any questions, contact Telma customer support at 800 797-7714, go to the Telma Web site at www.telmausa.com, or send an email to engineering@telmacse.com with your questions 24 hours a day / 7 days a week.

This document is the exclusive property of TELMA RETARDER INC. It cannot be copied, modified, forwarded, or given to any third party without prior agreement from TELMA RETARDER INC. Any infringement will immediately involve legal action.