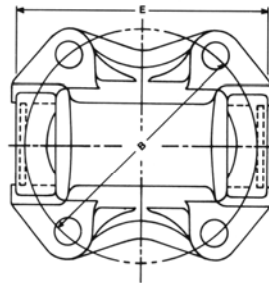


TECHNICAL INFORMATION

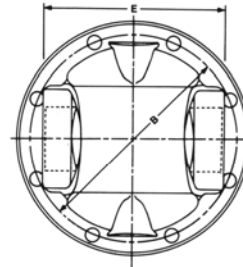
SUBJECT: Spicer Flange Yoke Fastener Torques for Axial Retarders

MODELS: All

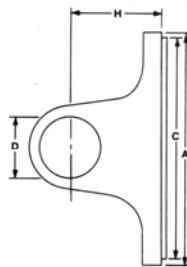
Effective Date: May 2000



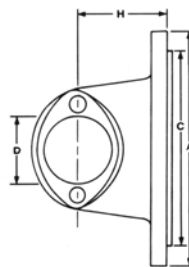
Rectangular
1280 thru 1550 Series



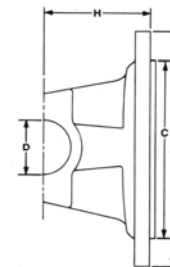
Circular
1550 thru 2150 Series



1280 thru 1550 Series



1610 thru 1880 Series



1910 thru 2150 Series

DRIVELINE SERIES	E APPROXIMATE DISTANCE ACROSS LUGS	D APPROXIMATE BEARING DIAMETER	NUT DIAMETER AND THREAD PITCH	NUT TIGHTENING TORQUE (LB.-FT.)	FLANGE INDEX (LAST 3 DIGITS OF PART NUMBER)	TELMA PART NUMBER	SPICER PART NUMBER
1350	3 7/8"	1 3/16"	7/16"-20	63-75	154	TIF01082	3-2-119
1410	4 7/16"	1 3/16"	7/16"-20	63-75	154	TIF01083	3-2-159
1410	4 7/16"	1 3/16"	1/2"-20	97-116	155	TIF01080	3-2-429
1480	4 7/16"	1 3/8"	1/2"-20	97-116	155	TIF01081	3-2-479
1480	4 7/16"	1 3/8"	3/8"-24	40-48	158	TIF01086	3-2-499
1550	5 1/4"	1 3/8"	1/2"-20	97-116	155	TIH05017	4-2-669
1550	5 1/4"	1 3/8"	3/8"-24	40-48	158	TIF01088	4-2-689
SPL 90/100	5"	1 5/8"	3/8"-24	40-48	158	TIF01089	90-2-19
1610	5 5/16"	1 7/8"	3/8"-24	40-48	158	TIF01091	5-2-279
1610	5 5/16"	1 7/8"	3/8"-24	40-48	152	TIF01090	5-2-629
SPL 140	5"	1 15/16"	3/8"-24	40-48	152/157*	TIF01085*	140-2-19*
1710HR	6 3/16"	1 15/16"	3/8"-24	40-48	152	TIF01093	6-2-749-1
1710HR	6 3/16"	1 15/16"	7/16"-20	63-75	157	TIF01094	6-2-779-1
1760HR	7"	1 15/16"	7/16"-20	63-75	157	TIF01095	6.3-2-19-1
SPL 170	6 7/16"	2 3/16"	7/16"-20	63-75	157	TIF01084	170-2-19
1810HR	7 1/2"	1 15/16"	7/16"-20	63-75	157	TIF01097	6.5-2-329-1
SPL 250	6 7/16"	2 3/8"	7/16"-20	63-75	157	TIF01101	250-2-19

* Flange yoke holes must be enlarged to 7/16" diameter for 157 index